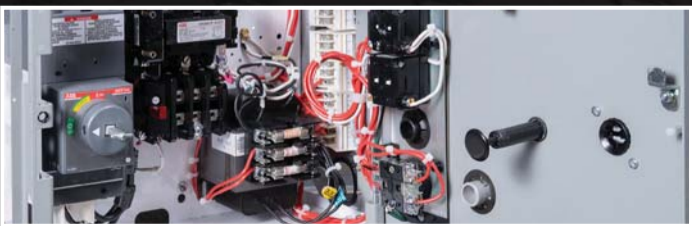
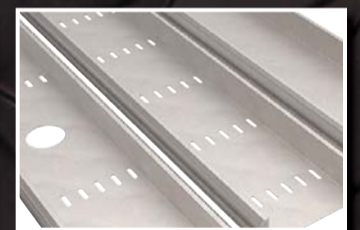
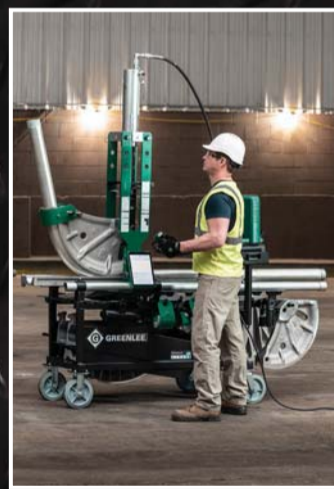




# EC&M<sup>®</sup> Product of the Year 2023 Competition



# Contractors **AGREE**

*"The pull is unbelievable...  
ten times more efficient  
than paralleled wire, from  
setup through installation."*

– CONSTRUCTION FOREMAN

**Service**  
 **PLEX**<sup>®</sup>

**SEE FOR YOURSELF**



Scan Code to  
Request Demo  
and Samples

 **Service  
Wire Co.**

Manufacturing quality. Delivering service.



Find out more at [servicewire.com/twist](http://servicewire.com/twist)

# CAST YOUR VOTE!

## HELP EC&M SELECT THE 2023 “PRODUCT OF THE YEAR” WINNER

EC&M readers, it's time to vote. Please help us identify the three most innovative and valuable products introduced to the market last year. The deadline to vote for this year's contest is June 23, 2023. To cast your vote, visit [www.ecmweb.com](http://www.ecmweb.com) between May 19 and June 23 to view a photo gallery of the 34 category winners. There, you can read product descriptions and view a product photo. After reviewing the category winners, help select the top winner by voting for your favorite product. As an added incentive, three lucky voters will be randomly chosen to receive a \$100 Amazon e-gift card.

EC&M established the Product of the Year Competition in 2001 to recognize excellence in new product development in the electrical industry. More than two decades later, this prominent awards program continues to showcase the most innovative products of the past year, recognizing the talent and commitment of those involved with all aspects of development. EC&M is honored

to bestow these awards on inventive products each year that ensure electrical professionals are able to do their jobs more efficiently and effectively.

Products eligible for this year's contest were those introduced to the market between Jan. 1, 2022 and Dec. 31, 2022. Out of the 110 product entries received, a panel of industry expert judges narrowed down the field as part of phase one of the competition. Ranking each product based on a uniform list of scoring criteria, the group ranked each entry, ultimately identifying 34 category winners (view the entire list on page 2) based on innovation and the ability to save end-users time and enhance productivity.

These 34 finalists will now compete for the 2023 Platinum, Gold, and Silver awards, which will be determined by EC&M subscribers in an online voting process administered on the EC&M website ([www.ecmweb.com](http://www.ecmweb.com)) beginning May 19. You can also find accompanying photos and product descriptions of all 110 entries in the pages of this special supplement.

### EC&M. Product of the Year 2023 Competition



#### Ty-Rap® TyGenic™ cable ties

The first antimicrobial + detectable fastening solution with the Grip of Steel® for improved food safety.

Introducing the industry's first antimicrobial, detectable, two-piece cable tie. Molded from FDA-compliant material tested 99+% effective at prohibiting microbial growth on the cable tie. Three-way detectability via visual, metal and x-ray detection systems. With the Grip of Steel locking device for strength plus all the other Ty-Rap® cable tie performance features you trust. [electrification.us.abb.com](http://electrification.us.abb.com)



## 2023 CATEGORY AWARD WINNERS

<u>CATEGORY</u>	<u>MANUFACTURER</u>	<u>PRODUCT</u>
Boxes & Covers.....	Orbit Industries .....	Universal 4" & 4 <sup>11</sup> / <sub>16</sub> " Square to 4" Octagon Fixture Ring
Camera & Video Equipment.....	Teledyne FLIR.....	The FLIR VS80 High Performance Videoscope
Conduit, Raceways & Wireways.....	Eaton .....	B-Line Series KwikSplice Cable Channel
Connectors & Terminating Devices.....	Burndy .....	Qikshear Bolt Connector
Controls, Sensors & Relays.....	Leviton .....	Decora Humidity Sensor and Fan Control Switch
Digital Tools & Software.....	NFPA .....	NFPA LiNK
Electric Vehicle Supply Equipment.....	Leviton .....	EV Series Electric Vehicle Charging Station
Fasteners, Hangers & Accessories .....	ABB .....	Ty-Rap TyGenic Antimicrobial + Detectable Cable Tie
Fittings (Conduit and Cable) .....	Arlington .....	Split Grounding Bushings
Labelers & Printers.....	Brother Mobile Solutions .....	Pro Label Tool
Lamps/LEDs.....	TCP.....	High Lumen LED Filament Lamp
Lighting Control Equipment .....	Leviton .....	Leviton Decora Smart Wi-Fi 2nd Gen Motion Sensing Dimmer and the My Leviton App
Luminaires (Outdoor – Area/Site).....	Keystone Technologies.....	XFit Bullet Floodlights
Luminaires (Recessed).....	PureEdge Lighting.....	TruCurve
Luminaires (Retrofit Units).....	Keystone Technologies.....	XFit Center Basket Retrofit Kit with Integrated SmartLoop Sensor
Luminaires (Surface-Mount/Suspended).....	Optec LED Lighting.....	OLPG1
Metering & Monitoring Equipment.....	Schneider Electric.....	I-Line Enable
Motors, Drives & Motor Controls.....	ABB .....	8000 MCC Replacement Starters & Feeder Units
Portable Test & Measurement Equipment .....	Klein Tools.....	Advanced Circuit Tracer Kit
Power Conditioning Equipment .....	ABB .....	MegaFlex UL Uninterruptible Power Supply
Power Distribution Equipment .....	Schneider Electric.....	FlexSeT Switchboard — Line Expansion
Power Sources .....	GAF Energy.....	Timberline Solar
Protective Devices .....	Phoenix Contact.....	CAPAROC Electronic Circuit Breaker System
Racks & Enclosures .....	Stahlin by Robroy Industries.....	SolarShield HMI Covers
Safety Equipment & Workwear .....	KEEN Utility .....	Independence Work Boot
Specialty Products .....	CBS ArcSafe.....	RSK-PMT Remote Switch Kit for Pad-Mounted Transformers
Tools (Accessory Items).....	Diablo Tools .....	Steel Demon Medium Metal Amped Carbide Teeth Reciprocating Blade
Tools (Equipment).....	Greenlee.....	Greenlee 881GX Hydraulic Bender with Mobile Bending Table
Tools (Hand) .....	Klein Tools.....	7-in-1 Impact Flip Socket with Handle
Tools (Power) .....	Milwaukee Tool.....	M12 Cable Stapler
V/D/V Test & Measurement Equipment.....	Triplet.....	TVR10G Pro LAN Network Tester & Probe
Wire & Cable.....	Atkore AFC Cable Systems .....	MC Glide Luminary
Wiring Devices .....	Hubbell.....	Twist-Lock EdgeConnect Connectors, Screwless Plugs, Flanged Inlets, and Receptacles
Work Lights.....	Lind Equipment.....	XP970LED and XP980LED



**SOFTWARE**

Designed for mid-market commercial and industrial buildings, EcoStruxure Energy Hub is a scalable, self-service IoT software as a service (SaaS) solution. The product simplifies the management of digitalized electrical and energy systems and enables the connection of building energy systems and smart devices. Users can automatically collect, store, visualize, report, and alarm on their data to manage digitalized electrical/energy systems in commercial, industrial, and institutional buildings. It connects to power and energy meters, sensors, intelligent breakers, and relays through the EcoStruxure Site Server and EcoStruxure Panel Server. It is accessible through the web or a mobile app.

*Schneider Electric*

**CATEGORY WINNER: CAMERA & VIDEO EQUIPMENT**

**VIDEOSCOPE**

The FLIR VS80 videoscope detects hidden issues in difficult-to-access locations and provides a range of diagnostic versatility across the visible and infrared imaging spectrums. It includes a 160 × 120 thermal camera on the end of a 1-m cable to inspect attics, crawl spaces, inside walls/industrial gearboxes, and other mechanical equipment to identify damages, leaks, and overheating parts invisible to the naked eye. It is also outfitted with a 1024 × 600 high-resolution, 7-in. touchscreen display and is available for purchase in seven different kits. Options include waterproof, ultra-slim probes, which can be swapped in and out within seconds; a 4.5-mm diameter 2-way articulating probe; a four-way articulating probe; a plumbing spool probe with a 25-m cable; single- and dual-HD visible camera probes; a standard definition probe; and a general-purpose thermal camera probe.

*Teledyne FLIR*



**EC&M**  
Product of the Year  
2023 Category Winner



**MRI LUMINAIRES**

The BalancedCare MRI series of luminaires elevates MRI lighting design while also meeting Military Standard 461G, balancing aesthetics, visual comfort, and lighting performance. The luminaires offer a sense of calm by introducing biophilic elements, while providing safe operation among any sensitive equipment in the room. The luminaires include a remote power supply system, which is complete with the necessary filters, drivers, and wiring for safe operation. RPS houses low-wattage drivers that require smaller filters, which produce less noise and are less expensive than traditional larger filters, according to the company.

*Axis Lighting*

**ACTIVE VOLTAGE CONDITIONER**

The PCS100 AVC-40 UL active voltage conditioner is designed to solve voltage disturbance problems. The high-performance power electronic system is suitable for industrial loads using significant power as well as large commercial buildings where continuity of service is important. It responds instantly to voltage disturbance events and provides continuous regulation of voltage. It ensures that equipment receives a clean, continuous flow of power, even during grid disturbances.

*ABB*



**EC&M**  
Product of the Year  
2023 Category Winner

**CATEGORY WINNER: METERING & MONITORING EQUIPMENT**

**DIGITAL MODULE**

The Square D I-Line enable module comes complete with a connected design to add value to an I-Line panelboard. Using a screwdriver, installers can mount the module onto the bus stack and fasten it with captive retaining screws. The customizable, space-saving unit allows users to integrate digital solutions without increasing the equipment footprint. It fits into the I-Line bus in place of a breaker, which eliminates the need for a panelboard box extension. It is available in factory-assembled panelboards and ready to install for new and retrofit applications. On models with Ethernet communications, the front access eases inspection of breaker meter values and maintenance details. Branch-level metering is integrated into the panelboard on the meter models.

*Schneider Electric*



**ARC PREVENTION TECHNOLOGY**

ArcBlok reduces the likelihood of an arc flash event and limits the incident energy exposure of electrical equipment. The arc flash mitigation technology protects the line side, where the power comes into the equipment, and is designed for low-voltage motor control centers and switchboards. It is the only product UL verified to limit the incident energy exposure to below 1.2 cal/cm<sup>2</sup> on the line side, according to the company. Line side arcs extinguish and self-clear in less than a cycle (16.6 msec) inside the isolated ArcBlok vault, ensuring fast recovery for multiple arc flash events and maximizing uptime. The product does not require any powering, special commissioning, testing, or operator intervention.

*Schneider Electric*

**ROBOTIC TOTAL STATION**

The Ri robotic total station offers extended layout capabilities and provides a longer laser range, an EDM capable of focusing, an eye-safe laser pointer, and improved target tracking. The instrument can be controlled from anywhere on the job site, giving users the ability to do their own layouts. By using the company's FieldLink software on a tablet or FieldLink MR on the company's XR10 for mixed reality, users can control and automate their workflow. VISION technology and integrated digital cameras allow for accurate, quick target detection/lock. The self-calibration feature performs automatic calibrations as required.

*Trimble*



## BATTERY-POWERED MOTOR

The Honda eGX is engineered to meet the performance output of the Honda GX100 and Honda GX120 engines with reduced vibration/noise and no need for fuel, oil, or AC power. The battery-powered commercial motor can be incorporated into OEM power equipment products for indoor and outdoor use. The product can be interchanged with a Honda GX internal combustion engine on selected outdoor power equipment. The initial applications are for rammers, power trowels, and vibratory plate compactors used in the construction industry. Future applications could include hydraulic power units and compressors. The sealed eGX motor and battery pack are dust- and water-resistant, making them suitable for use in harsh, heavy-duty environments.

American Honda Motor Company



## CATEGORY WINNER: LUMINAIRES (SURFACE-MOUNT/SUSPENDED)

### PARKING GARAGE LUMINAIRE

The OLPG1 series parking garage luminaire minimizes glare by using a flat diffuse lens with indirect lighting, which removes the LEDs from the line of sight. The heavy-duty, low-profile luminaire comes in lumen packages ranging from 2,700 lm to 15,000+ lm (23W to 130W), correlated color temperatures (CCTs) of 3,000K, 3,500K, 4,000K, and 5,000K, and is standard with 80 CRI. Five photometric patterned lenses are available to meet various garage requirements. The OLPG1 luminaire, which is suitable for low-clearance parking garages, features a circular housing, low-profile design, quick-connect mounting bracket, tapered shape, and all-aluminum pressure die-case design. The OLPG1 up-light adder provides an even array of 800 lm to the garage ceiling, eliminating the cave effect common in parking structures. Options include control systems, sensors, mountings, finishes, and other lighting accessories.

OPTEC LED Lighting



## LADDER

The AERO lightweight extension ladder is available in five sizes ranging from 16 ft to 32 ft. The industrial-grade ladder is made of fiberglass and is designed to be 25% lighter than traditional extension ladders. It can support 375 lb and has a Type 1AA duty rating. The ANSI- and OSHA-certified ladder features high-visibility green rails, slip-resistant deep tri-rungs, and extra-wide 19-in. clear feet. The interlocking box rail design reduces bouncing, twisting, and swaying and allows for a broader base width. Other features include a built-in bubble level, non-marring traction caps, swivel pick feet, and spring-loaded extruded rung locks.

Werner

## CABLE WRAPS

The ThermoWrap series of self-adhesive, hot-connection cable wraps provide elevated temperature indication to the naked eye. These calibrated, temperature-activated strips provide 24/7 safety monitoring and permanent color change as an early warning through visual indication before any type of failure or fire occurs. The permanent quality of the change highlights issues in straight and non-continuous load applications, protecting workers from electrical fire and operations from equipment failure. Current temperature-trigger options are available at 70°C and 90°C.

IRISS



## EV CHARGING STATION BASE

The modular precast Level 2 EV charging station base with integrated protective device eliminates the need to pour concrete for Level 2 charger installations, saving a minimum of a full day's labor for installation, according to the company. The integrated protective device does not require stand-alone bollards for protection or any additional devices. First, the contractor trenches, installs, and stubs up the conduit. Next, the base area is excavated to the same level as the conduit trench and filled with 6 in. of crushed stone. After the base is placed over the conduit stub and backfilled, the contractor mounts the charging station or post to the base. Installers can use one of the two specified connection methods rated for 150 mph and 200 mph wind zones, respectively. After the charger is wired, the installation is complete.

EZ-CRETE

## CATEGORY WINNER: TOOLS (ACCESSORY ITEMS)

### SAW BLADE

The Steel Demon AMPED carbide teeth reciprocating saw blades now feature an industrial-grade coating, black industrial cooling element (I.C.E.), which provides a slick, lubricant-like action for a cool cutting edge and improved chip evacuation. Offered in 6-in. and 9-in. lengths, this carbide blade offers up to 100 times longer cutting life in metal cutting applications ranging in thickness from 1/16 in. to 5/16 in., according to the company. The blades feature a 1-in. oversized blade body to provide stability and rigidity for straighter cuts with less vibration. The TiCo high-density carbide is designed for medium metal applications, including strut, pipe, and stainless steel.

Diablo Tools



EC&M Product of the Year 2023 Category Winner

## FIRE ALARM CABLE

The patented MC Glide fire alarm lightweight galvanized steel armored cables feature a flatter, smoother profile to reduce fatigue during cable pulling. The product is available as a dual-rated type MC/FPLP, which includes Phase ID and type FPLP. Both types glide through metal studs, ceilings, and j-hooks with less resistance. As a result, it minimizes the possibility of cable hang-ups, which may knock down studs. The cables work with the same tools, fittings, and supports as traditional MC cables. The product may be surface mounted, fished, and/or embedded in plaster.

Atkore AFC Cable Systems

**SYNCHRONOUS MOTOR**

The SynRA synchronous motor can connect to building automation with a plug-and-play installation. Available with the ID300 Perfectspeed integrated drive, the patent-pending motor offers ratings at IE 4 and IE 5. The motor can be replaced without installing an entirely new system and controls. The product's smart building technology results in less wear and tear on blower or pump systems by matching application demands with variable speed. An aluminum cage allows the motor to start like an asynchronous induction motor and transition to synchronous operation. Benefits include no RPM slip, higher peak efficiency, and a flat efficiency curve. The magnet-free design allows for programming and compatibility with existing VFDs.

*Nidec*



**CABLE CUTTER**

The ES20LXR overhead remote cable cutter is designed to improve the safety of high-voltage workers by keeping them in the safe zone while cutting. Its lightweight design/rotating head puts less strain on the body to help reduce user fatigue. The tool weighs less than 5 lb with a battery, has a 350° rotating head, and is designed to give the user operational control while cutting hard metals in utility distribution environments. A universal remote with handheld and remote usage settings is compatible with the company's remote tools. Visual indicators provide tool status with forward-stop-reverse at any point, and the patented trigger jacket helps secure the tool with a universal spline connection to the hot stick.

*Greenlee*

**CONTROLLER**

The TruBlu Bluetooth mesh luminaire controller with a long-range antenna offers networked lighting control in a wide variety of outdoor settings. Because hardwiring can be cost-prohibitive for outdoor applications, the long-range (900-ft) Bluetooth mesh wireless controller can be integrated directly into a wide range of commercially available luminaires. The controller is also available with features like continuous dimming, DLC certification, and zone/luminaire level lighting control (LLLC) options.

*McWong International*



# SPLIT GROUNDING

**EC&M**  
Product of the Year  
2023 Category Winner

# BUSHINGS for THREADED and UNTHREADED RIGID

*Also Compatible with EMT*

Get convenience and time-savings with Arlington's 550 series SPLIT grounding bushings. The split allows the addition of a bushing AFTER conductors are installed in threaded or unthreaded Rigid/IMC conduit. Great for tight spaces!

- In 1/2" to 4" trade sizes – Ships Assembled
- Also compatible with EMT, 2-1/2" to 4" trade sizes, and EMT threaded fittings

**EASY TO INSTALL**

- 1** Loosen side screws. Allow bushing to pivot around installed cables
- 2** Tighten set screw to seat bushing on conduit

**Arlington®**

800/233-4717 • [www.aifittings.com](http://www.aifittings.com)

[aifittings.com/landing/split-grounding-bushings](http://aifittings.com/landing/split-grounding-bushings)

## CATEGORY WINNER: FITTINGS (CONDUIT & CABLE)

### SPLIT GROUNDING BUSHINGS

The 550 series split grounding bushings, available in ½-in. to 4-in. trade sizes, are split to allow the addition of a bushing after conductors are installed in conduit. The zinc diecast bushings ship assembled and can be installed on threaded and unthreaded Rigid/IMC. They're also compatible with EMT, 2.5-in. to 4-in. trade sizes, and EMT threaded fittings. To install them, the user must loosen the two side screws on the split bushing, leaving one side screw engaged to allow the bushing to open and pivot around the installed cables. After retightening the side screws, the installer will tighten the set screw to seat the bushing securely on the conduit.

*Arlington Industries*



**EC&M  
Product of the Year  
2023 Category Winner**



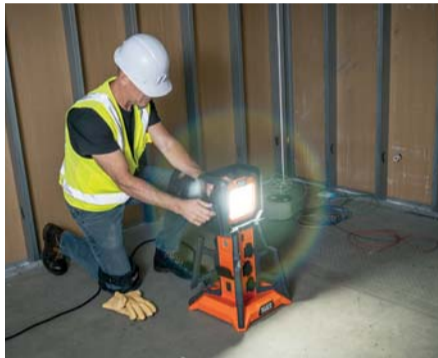
**EC&M  
Product of the Year  
2023 Category Winner**

## CATEGORY WINNER: DIGITAL TOOLS & SOFTWARE

### EDUCATIONAL PLATFORM

The NFWA LiNK is an application-based platform containing real-time code information and situational content. It offers NFWA codes and standards, expert commentary, and supporting content to practitioners working in electrical, fire, and life safety. Subscribers can add personalized notes, in addition to bookmarking and sharing specific sections of code. They can also quickly search all NFWA codes and standards by keyword or phrase. Users have the flexibility to use the platform online or offline via mobile, tablet, laptop, or desktop devices.

*National Fire Protection Association*



### POWER DISTRIBUTION

With the PowerHub, users can distribute power and lighting to the job site from a central location. The space-saving, vertical design keeps electrical plugs off the ground by stacking six covered, surge-protected 120V outlets. The built-in GFCI removes the need for additional GFCI adapters. Additionally, it features two USB-C and two USB-A ports along with an adjustable 5,000-lm LED work light. The exoskeleton handles are located on the top and sides, and the integrated power cord wrap holds up to 50 ft of 12 AWG cord for storage and transportation.

*Klein Tools*

### UPS

The compact Easy UPS on-line lithium-ion 120V accommodates a wide input voltage range for unstable power conditions by providing clean power for essential and sensitive devices. With its lithium-ion battery, it has two to three times longer runtime and faster recharge time compared to a VRLA battery, according to the company. The rack/tower convertible design provides flexibility in tight spaces, and the built-in 2U rack height makes it both lighter and space-saving. The PowerChute Business Edition software allows for the unattended shutdown of servers and workstations using serial or USB cables, which prevents data corruption and equipment damage. An optional network management card can support network-based monitoring.

*Schneider Electric*



### OUTLET BOXES

The UL-listed Crouse-Hinds series of Quick-Lok outlet boxes helps simplify rough-in installations by providing more space to install and manage cables. The box features an exterior connector with an integral insulator and removable KO plug per cable location, which helps maintain all available space within the box for device wiring. It also accepts internal fire pads and includes a ground bump with pre-installed ground pigtails standard, making it suitable for prefabrication. Optional accessories include first means of cable support with or without backside support integrated and welded mounting brackets with patented "S" curve shape for nesting on a wall stud.

*Eaton*



### ENERGY MANAGEMENT DEVICE

The UMG-801 modular energy measurement device enables facility managers to measure energy and monitor power quality/residual current on one device. The product, which offers plug-and-play connectivity, also features an integrated data and power bus system and a high-resolution, remote display. It is available with eight current measuring channels with additional multifunctional capabilities. These multifunction channels can capture residual currents, temperature, or mA signals. Other features include four digital inputs and outputs for recording external data such as gas/water usage and one analog output for control system signals. The RS-485 interface allows for master-slave data measurement and topologies, and dual Ethernet interfaces enable higher-level connectivity and data transmission.

*Janitza Electronics GmbH*

## CATEGORY WINNER: POWER DISTRIBUTION EQUIPMENT

### SWITCHBOARD

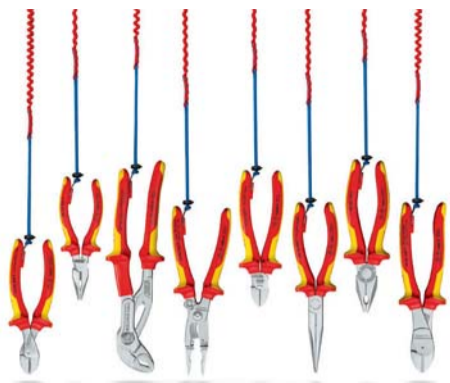
FlexSeT is a simplified, modular service model for low-voltage switchboard design, sourcing, installation, and maintenance. It is UL listed, with ratings up to 2,000A. Features include a cover with captive screws, which prevents screws from being lost or left inside potentially energized equipment. The hook and fix pre-assembly kits maximize assembly, enhance safety, and ensure the alignment of panels and compartments. The swing-out main provides ease of access for wiring during installation and reduces time by providing unobstructed access to terminal points. The bottom-fed main up to 1,600A reduces the footprint and improves wiring time with an all-in-one section.

*Schneider Electric*



**EC&M  
Product of the Year  
2023 Category Winner**





**INSULATED TOOLS**

The new line of 1,000V insulated tethered tools includes two snipe nose side cutting pliers, two diagonal cutters, two high-leverage diagonal cutters, a Cobra, and cable shears. These eight tools offer protection against accidents caused by falling tools. The tether attachment mount point is integrated securely into the handle, and the flat mounting point does not get in the way. The tools are not to be used on lanyards of 5 ft or more, and the maximum tool load for the adapter or lanyard is 3.3 lb. The full tethered system includes lanyards, carabiners, and short adapters, allowing the user multiple ways to connect a tethered tool to a wrist, belt, or harness.

*KNIPPEX Tools*

**JOB-SITE PRODUCTIVITY APP**

Trimble Connect2Fab enables a seamless, cloud-based connection between design and fabrication workflows for contractors. Both fabrication and field stakeholders can gain Building Information Modeling (BIM) access, thereby reducing issues such as re-work, waste, constructability, and clash detection. Shop and field personnel do not need modeling experience or CAD platform access to create or modify spools. Instead, they can create spool drawings and set endpoints directly in the web-based application within the collaboration platform.

*Trimble*



**FABRIC MESH PROTECTION FOR CABLES**

MaxWrap, a new OSP underground cable placement solution, allows users to safely and quickly add additional cables to pathways that are considered full. This pulling-assist solution allows additional cables to be added to populated conduits or innerducts while safely protecting the new and existing cable during the pull. The no-dig solution addresses key issues seen when overlaying cables, such as pulling over live fiber, damage caused due to cable over cable abrasion, and high pulling tensions resulting from the limited space.

*Milliken & Company*

**CATEGORY WINNER: SAFETY EQUIPMENT & WORKWEAR**

**WORK BOOT**

The new Independence medium-duty work boot features an abrasion-resistant, supple leather upper and a waterproof, breathable membrane for dryness. The Luftcell midsole is infused with nearly 100,000 air bubbles per cubic centimeter for all-day support. The asymmetrical carbon fiber toes are 15% lighter than steel, and the oil- and slip-resistant outsole is lighter weight and more durable than rubber, according to the company. The boots are also EH rated to provide a secondary source of protection in case of accidental contact with live electrical circuits. The series will be available in several colorway, safety toe, collar height, and insulation options.

*KEEN Utility*



**EC&M  
Product of the Year  
2023 Category Winner**



**EC&M  
Product of the Year  
2023 Category Winner**

**CATEGORY WINNER: SPECIALTY PRODUCTS**

**REMOTE SWITCH KIT**

The RSK-PMT remote switch kit permits workers to operate a pad-mounted transformer from outside the arc-flash hazard boundary. This product allows workers to turn the disconnect switch, which is located inside the transformer's exterior doors. An insulated hot stick can be inserted through a modified port from the outside of the transformer. The hot stick serves as an interface between the switch on the inside and the company's remote switch actuator on the outside that can turn it to the desired selection.

*CBS ArcSafe*



**CONTROL STATION ASSEMBLIES**

The upgraded EDSX/DSDX series control stations are factory-sealed, hazardous control station assemblies with pushbuttons, pilot lights, and selector switches. Factory-sealed devices help eliminate the need for explosion-proof conduit seals in any Class I, Division 2 application. The Class I, Division 2 assembly provides NEMA 4X protection against water ingress and corrosion in demanding conditions. With an extended temperature range of -40°C to 60°C standard, the series is suitable for extreme environments.

*Eaton*

**SURGE PROTECTIVE DEVICES**

Data line surge protective devices (SPDs) help deliver surge protection for data and signal applications in a compact design. These UL 497B-listed SPDs are designed for applications where installation space is a premium. The low let-through voltage and full-mode protection design extend equipment lifetime from surges. A multi-stage protection module with a quick-release mechanism allows easy line commissioning and removal in the field. The space-saving design of OVR Q compact units is suitable for multiple lines in tight installations. The built-in DIN rail foot allows for simple mounting, and the durable, flame-retardant housing enhances the protection of sensitive equipment. Specifications include a nominal voltage of 15V; a bandwidth of (-3 dB 50 Ω system) 45 MHz; a temperature range of -40°C to 80°C; and a surge current rating of (8/20 μsec) 20kA per pair.

*ABB*



## LED LUMINAIRES

Linear LED lighting Gen-2, part of the Crouse-Hinds series, is designed for non-hazardous, hazardous, and wet environments. The MLLA, DLLA, and PLLA Linear LED luminaires are now available with a lumen output of 130 lm/W to 134 lm/W efficacy and additional driver space, providing more room for wiring. The pendant mount is now integral to the luminaire, and mounting kits are shipped with the luminaire based on the mounting type selected within the catalog structure.

**Eaton**



## LIGHTING DIMMER AND SWITCH

The Diva smart dimmer and the Claro smart switch are now part of the Caséta smart lighting control system. The paddle design adds dimming control with a soft-glow light bar and preset functionality. The products come in white, black, brown, gray, light almond, and ivory. The new Diva smart dimmer works with the home's existing wiring and doesn't require a neutral wire. Added wireless connectivity offers the ability to add a second "switch" almost anywhere by pairing the Diva smart dimmer with a Pico smart remote to avoid running wires or cutting holes in walls. The Diva smart dimmer can be installed in a wired 3-way application using either an existing mechanical switch or a wired accessory switch.

**Lutron Electronics**

## DOWNLIGHTING SYSTEM

The DRD + M series modular downlighting system (which consists of a housing, module, and trim) features more than 50 interchangeable trim choices to fit design aesthetics, light distribution requirements, and specialty applications. A single housing can accommodate 98% of downlighting applications, including fixed, adjustable, and wall wash from 750 lm to 1,500 lm. The interchangeable modules feature CCT options of 2,700K, 3,000K, 3,500K, 4,000K, and warm dim (3,000K to 1,800K); field changeable optics and lenses to change the beam spread; and smooth dimming down to 1% with integrated TRIAC/ELV or 0V-10V drivers. The housings (offered in round or square apertures for new construction or retrofit projects) install on most ceiling types.

**DMF Lighting**



**EC&M**  
Product of the Year  
2023 Category Winner



## CATEGORY WINNER: FASTENERS, HANGERS & ACCESSORIES

### CABLE TIE

The two-piece Ty-Rap TyGenic cable tie is designed to inhibit microbial growth while also offering X-ray, metal, and visual detectability. The UL-recognized and RoHS-compliant cable tie is molded from an FDA-compliant proprietary nylon resin blend containing both an EPA-registered antimicrobial additive and detectable particles. The antimicrobial additive is effective against a broad spectrum of microorganisms, including various bacteria, viruses, protozoans, and fungi, such as mold and mildew. The deep blue cable tie is designed with UV-resistant material for operating temperatures up to 85°C (185°F) and provides a surface that microbes cannot adhere to and replicate on.

**ABB**

## CATEGORY WINNER: WIRING DEVICES

### TERMINATION DEVICES

EdgeConnect screwless termination technology saves up to 80% termination time, according to the company. The new family of EdgeConnect Twist-Lock products now includes 3-wire connectors and flanged receptacles and 3-wire screwless plugs and flanged inlets. Strong steel springs continuously apply pressure to wires, ensuring reliable and secure connections. Applications subject to vibration or thermal cycling improve wire retention over time. The products can be used for distribution systems, powering motor drives, or installing equipment on the production floor.

**Hubbell**

**EC&M**  
Product of the Year  
2023 Category Winner



## THERMAL IMAGING CAMERA

The IRTC600 thermal imaging camera accelerates troubleshooting and eliminates guesswork with point-and-shoot thermal images and video that reveal problems like overloaded circuits, pitted and corroded bus bars, or faulty connections. Five color palettes combine with an adjustable fusion view mode that blends infrared images with visible images to help customers recognize familiar equipment using visible image cues. The product includes an operating temperature range of -4°F to 572°F; high thermal sensitivity to pick up subtle temperature variations ( $\leq 70$  mK); accuracy ( $\pm 2\%$  or  $\pm 2^\circ\text{C}$ ); 3-GB storage; and thermal resolution (220 x 160 pixels) for electrical jobs. The thermal imaging camera, which features a bright 3.2-in. display, includes a rechargeable 3.7V battery, USB cable, AC adapter/charger, image analysis software, and a storage pouch.

**Tripplett Test Equipment & Tools**



## MIXED-REALITY SOLUTION

FieldLink MR is a mixed-reality solution for construction layout built on the company's Connect collaboration platform. It offers a new way to perform construction layout, enabling professionals to quickly navigate to tasks on the job site to get more done in less time. The app runs on the company's XR10 with HoloLens 2, a hardhat-integrated mixed-reality device. With the technology, electrical contractors can visualize the design and layout data together in the field, enabling more people on site to make informed decisions and spot clashes earlier in the process. Intuitive visual cues presented through the mixed-reality hardhat lead workers directly to each point for them to physically lay out pertinent information on the construction site, such as hanger bolt locations, inserts, and more.

**Trimble**

**PIPE THREADER**

The 760 FXP power drive is a handheld cordless threader that threads 1½-in. to 2-in. Schedule 40 pipe. The portable threader’s brushless motor completes up to 30 2-in. threads per charge using the 4Ah battery, according to the company. An 8Ah battery is also available for extended life. The tool, which features integrated Bluetooth connectivity, is offered in two variations (12-R and 11-R) and is compatible with the existing threader die heads of that type. It reaches 42 RPM in forward and reverse. It threads ⅝-in. to 2-in. pipe and automatically shuts off when kickback is detected. A retention ring locks the die head into place.

**RIDGID**



**SCREWDRIVER**

The 14-in-1 HVAC adjustable-length screwdriver features HVAC driver bits and nut drivers in one tool. It can be used as a screwdriver or as an impact driver attachment. The flip socket on the end of the blade has three positions for multiple functions. The tool is suitable for tight spaces, impact driving, and long-reach applications. It includes 12 commonly used driver bits housed in the handle, a cushioned grip, and a spin grip for control. A rare Earth magnet securely holds bits and hex head fasteners.

**Klein Tools**

**BOX MOUNTING BRACKET**

The UL-listed, patented FA-TBAR-4R is a ready-to-install solution for mounting 4O-compatible life safety devices in drop ceilings. The bracket adjusts from 15 in. to 25 in. to span the T-grid, with riveted clips that sit easily into the grid channel. The 4-in. octagon box adjusts vertically from 0 in. to 1½ in. to ensure the opening is flush with the tile surface (pre-set at ⅝ in. raised). The 4O box measures 2⅝ in. deep, which is suitable for smoke detectors and exit signs. The box is powder coated with a red finish. The FA-TBAR-4R includes holes for branch line restraints.

**Orbit Industries**



**FA-TBAR-4R**



**EC&M**  
**Product of the Year**  
 2023 Category Winner



**8000 Motor Control Centers Replacement Starters & Feeder Units**

Expand, modernize, and extend the life of motor control centers

2023 CATEGORY WINNER  
**Motor, Drives, & Motor Controls**



## CATEGORY WINNER: CONNECTORS & TERMINATING DEVICES

### CONDUCTOR CONNECTORS

The Qikshear shear bolt connectors require no special tools or dies, and its design results in the correct clamping force. The bolt shears off in a way that leaves no exposed edges above the surface of the connector. An Allen head socket wrench is all an installer needs for a secure connection. One-hole lug and two-hole NEMA-spaced lug designs quickly fasten a conductor to a pad. A splice model joins two conductors. Constructed of highly conductive aluminum alloy with tin plating, these connectors reduce galvanic corrosion and oxide buildup, according to the company. Four smaller sizes cover 2/0 AWG to 750kcmil wires. One connector is sized for 1,000kcmil, and the largest connector handles 1,250kcmil conductors. These new 486A-486B UL-listed connectors are AL9CU dual-rated for use with copper and aluminum conductors. They can be used on circuits up to 35kV.

**BURNDY**



**EC&M  
Product of the Year  
2023 Category Winner**



**EC&M  
Product of the Year  
2023 Category Winner**

## CATEGORY WINNER: WIRE & CABLE

### ARMORED CABLE

The patented MC Glide Luminary Tuff lightweight steel and MC Glide Luminary Lite aluminum armored cables feature a flatter, smoother profile to glide through metal studs and ceilings with less resistance, without sacrificing flexibility or strength. New tools, fittings, or supports are not required for installation. Install work moves faster and more efficiently with less chance of damaged studs, and installers report less overall fatigue after a full workday, stating that it feels lighter when pulling off the reel and through studs, according to the company. The product, which is manufactured with purple and pink control conductors, is compliant with 2020 NEC Sec. 410.69.

**Atkore AFC Cable Systems**



### BUSWAY

ReliaGear busway combines the features of the Spectra series busway, the technology of the SACE Tmax XT circuit breaker, and a fused switch in a plug-in unit. The custom-designed, modular electrical power distribution system is available in both feeder and plug-in styles. The busway is designed for applications where space is critical, and it can be easily modified due to its flexible modular design. Busway runs can be easily added, disassembled, and relocated. Available up to 6,000A in feeder style and 5,000A in plug-in style, the busway is delivered and ready to be installed. The Blue Coat epoxy insulation provides an insulation life of 50+ yr, reduces the risk of failure, and enables the busway to perform across a wide temperature spectrum.

**ABB**

## WIRELESS LIGHTING CONTROLS

Intellect wireless integrated sensors and fixture controllers simplify lighting controls and can install directly into luminaires to enable wireless fixture control as part of a GreenMAX DRC wireless lighting control system. Users can configure the system, create lighting scenes, add lighting schedules/events, and program keypads through the app. The wireless fixture sensors and controllers are available in an industry-standard 1/2-in. electrical knockout or for installation within the luminaire wiring compartment. Control options include DALI, single, or dual 0V-10V channels for standard, bi-directional, or tunable white luminaires.

**Leviton**



### GLOVES

The high-dexterity cut level 3 polyurethane-dipped gloves are made of an 18-gauge knit for total mobility. The gloves also have a reinforced nitrile coating between the thumb and index finger for enhanced durability in high-wear points. The polyurethane dip makes the glove feel lighter and more breathable while working, according to the company. Additionally, Smartswipe fingertips provide users with full access to touchscreen devices without removing the gloves, while a color-coded wristband allows for easy cut-level identification.

**Milwaukee Tool**

## CATEGORY WINNER: WORK LIGHTS

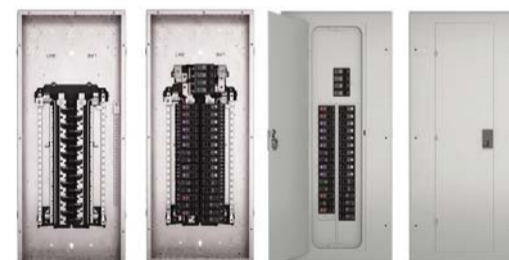
### WORK LIGHTS

The XP970LED and XP980LED work lights have been designed to replace existing portable hazardous location lights. The LED has a thin housing around it so that the final product is easy to move around and store. The lights can be used with many different mounting accessories, including tripods, floor stands, magnet mounts, and scaffold mounts. The lights are approved by cULus and are certified for Class I, Division 1, Groups B, C, and D, Class II, Division 1, Groups E, F, and G. The XP970LED produces 5,660 lm, uses 40W, and weighs 17 lb, while the XP980LED produces 24,000 lm, using 160W and weighing 35 lb.

**Lind Equipment**



**EC&M  
Product of the Year  
2023 Category Winner**



### LOAD CENTER

PowerMark PRO features plug-on neutral electronic circuit breakers that attach to the neutral bus using the company's ReliaLock connection feature and round plug-on neutral bars. Factory-installed neutral and ground bars simplify wiring. The product maximizes gutter space for plug-on neutral AFCI, GFCI, and DFCI breakers. It also simplifies retrofits with an AFCI-shared neutral. The load center is equipped with a drywall-locating mounting depth location tab, diamond key knockouts and a new knockout pattern, factory-installed ground bar and ground lug for the main lug load center, and 100% neutral terminations. The tin-plated copper bus prevents corrosion. Additional features include a steel breaker mounting rail, a one-piece interior, and the ability to be used as service entrance equipment. The main lug load centers are convertible to the main circuit breaker.

**ABB**



**EC&M**  
Product of the Year  
2023 Category Winner

**CATEGORY WINNER: MOTORS,  
DRIVES & MOTOR CONTROLS  
MCC BUCKETS**

The company's replacement 8000 motor control center (MCC) buckets are designed for a wide variety of applications. New buckets with SACE Tmax XT circuit breakers are available for legacy 8000 MCCs and are compatible with legacy 7700 and Spectra series MCCs. The new SACE Tmax XT-based feeder and starter units allow repair, expansion, and life extension for existing MCCs. All buckets are UL 845 rated and designed to work with existing customer equipment. The overall structure of the buckets is similar to existing bucket designs with a steel frame, rear-facing bus stabs to engage the existing vertical bus, and jack screws to mount the unit in the existing vertical section. The circuit breaker uses a new mounting bracket, door, and rotary operating mechanism. The door is right-hinged and mounted to the bucket, matching the original 8000 design.

**ABB**

**GROUND-FAULT CIRCUIT INTERRUPTER**

The UL-listed SB5000 industrial Shock Block ground-fault circuit interrupter helps protect workers from electrical shock by detecting leakage current and interrupting the circuit for loads up to 60A. The ground check protection functionality monitors the ground wire for continuity, from the Shock Block to the load, to interrupt power or prevent energization of equipment if compromised. It is suitable for many industries and locations where electrical equipment is being used outdoors or in wet environments. It offers a 6mA trip level for Class A and 20mA for Class C and D devices, reduces unnecessary tripping by implementing the inverse time curve defined by UL 943 as well as a DFT filtering algorithm, and includes NEMA 4X and IP69K enclosure ratings for all food preparation environments.

**Littlefuse**



**TRANSITION FITTING ADAPTER**

The PBEA to GRC PVC bell end adapter to GRC conduit is a transition fitting adapter that can be installed between a PVC conduit and a galvanized rigid conduit. It is a faster way to transition from a Schedule 40/80 PVC conduit to a 90° galvanized rigid elbow without reaming PVC conduit, according to the company. Installers need to insert the fitting into the bell end of a PVC 10-ft length conduit and then secure it with PVC cement glue. Next, they would insert the opposite end of the fitting screw into a 90° galvanized rigid elbow. The product is cULus listed and can be used with transition couplings from ½ in. through 6 in.

**S-P Products**

**METER**

The ST40 0.2 accuracy compact energy and power quality meter in a UL-rated, pre-wired NEMA 1 type enclosure adds metering capability without a redesign. It measures 7.40 in. wide, allowing it to be used where space is limited. The meter is pre-wired in the enclosure (including all fusing) for error-free and quick installation. The enclosure is lockable to prevent tampering. The UL-listed, finger-safe fused voltage inputs ensure user safety. The meter is configured with an mV current input option capable of being paired with 0.333V CTs and Rogowski coil CTs for submetering/other low-current applications.

**Electro Industries/GaugeTech**



**BATTERIES**

Compatible with all 20V MAX tools and chargers, POWERSTACK batteries use pouch battery cell technology. Cylindrical cells make up the familiar rounded-style battery, while lithium-ion pouch cells are flat and stackable. The pouch cells use the space that's otherwise wasted between cylindrical cells, resulting in more stored energy through more efficient use of the housing. The 20V MAX 5Ah battery uses a stack of five pouch cell batteries. It offers less internal impedance, 50% more power, 50% more work per charge, and a twice as long lifespan, according to the company.

**Stanley Black & Decker/DEWALT**



**OUTDOOR LED LUMINAIRE**

The Ratio bollard, part of the family of the company's Ratio outdoor luminaires, features a rectilinear design with clean lines on all four sides of the luminaire. The LED product features a traditional luminaire aesthetic but is designed for sustained, long-term performance with advanced thermal management and surge protection. The optical design provides distribution flexibility with zero uplight. Each side of the bollard has its own high-performing optical LED arrays allowing customized illumination in 90° increments. The product, which features photocontrol options for energy-saving operation, is suitable for a variety of applications, is available in multiple heights, and has a field rotatable base plate for contractor-friendly installation.

**Beacon (HLI Brand of Current)**

**CATEGORY WINNER: TOOLS (POWER)**

**CABLE STAPLER**

The battery-powered M12 cable stapler features a compact, lightweight design to give users access to tight stud bays and increase efficiency during the rough-in process, according to the company. It also offers improved ergonomics when stapling overhead or during difficult-to-reach situations. Moveable cable guides ensure proper alignment, and the coil-spring mechanism consistently sinks the staples to the appropriate depth when fastening NM-B sheathed cable (14 AWG, 12 AWG, and 10 AWG) and low-voltage cables. The product, which is only compatible with the company's 1-in. insulated staples (sold separately), gives the user the run-time needed to sink up to 1,200 staples on a fully charged M12 CP2.0Ah battery.

**Milwaukee Tool**

**EC&M**  
Product of the Year  
2023 Category Winner



## CATEGORY WINNER: POWER SOURCES

### SOLAR ROOFING SYSTEM

The Timberline Solar roof system directly integrates solar technology into traditional roofing materials. It incorporates the Timberline Solar energy shingle, which installs like a traditional roofing shingle. The building-integrated photovoltaic roofing system incorporates energy shingles and roofing shingles to generate solar energy from either new or replacement roofs. It complies with all applicable building codes and is listed by UL and Intertek to all required safety standards. The energy shingles measure 6¼ in. × 17½ in. × 1 in. and weigh 10.1 lb. They have a coverage area of 32 energy shingles or 1.43kW per sq ft and an allowed roof pitch of 2:12 or greater. The max installation altitude is 13,123 ft, and the average ambient temperature range is -40°F to 122°F.

*GAF Energy*



**EC&M**  
Product of the Year  
2023 Category Winner



### UPS

The Easy UPS 24VDC DIN rail industrial is designed for industrial automation and controls. It helps machine builders and system integrators efficiently manage their automation control equipment in case of a power event. The UPS comes with relay contact terminals that enable remote management of connected equipment and monitoring of the UPS. Equipped with DC input/output terminals to support PLCs and HMIs, the UPS also offers extended battery pack support of up to three additional battery packs for longer runtime during power outages. It allows for better control over industrial infrastructure with remote monitoring/management via relay contacts, external battery pack support, and LED indicators.

*Schneider Electric*

## PURCHASING PLATFORM

Remarcable is a cloud-based platform that helps electrical contractors and distributors streamline purchasing processes to save time and money. With multiple workflows, two applications in one software, supplier electronic connections, and direct contractor accounting integrations, the platform can adapt to any procurement process to fit an electrical contractor's growing needs. The software increases communication, streamlines workflows, and provides visibility for all users, including field, procurement, accounting, estimating, warehouse, and management.

*Remarcable*



### TOOL KIT

The M18 FUEL 2-tool combo kit includes the M18 FUEL ¼-in. hex impact driver and the M18 FUEL ½-in. drill driver. The POWERSTATE brushless motor completes 2<sup>9</sup>/<sub>16</sub>-in. self-feed holes in dense materials. The drill measures 6.9 in. in length, and the AutoStop control mode prevents over-rotation in a bind-up. The Redlink Plus intelligence offers trigger control by providing smooth acceleration for small fasteners to prevent stripping of screws or damaging of materials.

*Milwaukee Tool*

### FISH TAPES

Steel fish tapes, part of the REEL-X line, make fishing two times faster compared to a traditional fish tape, according to the company. They include laser-etched measurement markings every foot. Available in ⅛-in. and ¼-in. sizes, they come in various lengths from 65 ft to 240 ft. The expanded steel offering also includes stainless steel fish tapes, which are corrosion-resistant and suitable for fishing in wet environments. They have an anti-bind case designed to reduce friction and user strain. The patent-pending case design features a free-spinning interior reel to eliminate binding, requiring less physical force to feed and pull the tape, reducing fatigue. The case opens easily to remove dirt and quickly swap out reel cartridges.

*Greenlee*



**EC&M**  
Product of the Year  
2023 Category Winner

## CATEGORY WINNER: LUMINAIRES (RECESSED)

### LIGHTING SYSTEM

The TruCurve curved recessed lighting system allows designers to illuminate in any shape and color. The plaster-in 24VDC LED system bends left to right, allowing for curved, organic shapes to be designed on any flat ceiling or wall plane and recesses into ⅝-in. drywall — with no joist modification required. It is available in ½-in. and 1-in. channel widths and features a soft, diffused lens with no visible pixelation with up to 63 lm/ft at 3,000K. The channel can accommodate curves with radiuses ranging from 7° to 180°. It is available in a broad range of standard color temperatures, including two warm-dim options, tunable white, and the company's TruColor RGBTW.

*PureEdge Lighting*

## CATEGORY WINNER: CONTROLS, SENSORS & RELAYS

### HUMIDITY SENSOR

The Decora humidity sensor and fan control switch is designed to work with ventilation/exhaust fans to automatically detect excess humidity in a room. When activated, the ventilation fan will lessen condensation, helping reduce mold and mildew. The fan will automatically switch off after the set time-out period. The built-in sensor uses a microprocessor combined with digital sensing technology to continuously monitor and manage a space's humidity levels. The device (which features a slim profile) does not require a neutral wire for installation. With the Green Flex Sleeve, installers can connect to a ground wire or to a neutral wire when the sleeve is removed.

*Leviton*



**EC&M**  
Product of the Year  
2023 Category Winner

**LOAD CENTER BRACKET**

The LCB-16 is a two-piece steel bracket designed for load center prefabrication. The product, which is made in the United States, features vertical slots to support multiple MC/AC or flex cable runs. LCB-16 outer flanges mount directly to the stud face and fit a 16-in. stud bay. Vertical slots accept a wide range of cable straps or ties. The bracket allows load center packages to travel safely with cable whips and fittings attached.

*Orbit Industries*



**TRAINING PROGRAM**

The line mechanic apprenticeship SuperApp combines augmented reality with interactive eBooks to make training new workers more effective and efficient. These digital programs give companies a way to refine and transfer the wisdom of veteran workers and share it with apprentices in an interactive way. It replaces antiquated training materials with an immersive, multimodal digital curriculum of 17 eBook titles and 12 mobile apps that are delivered via tablets.

*Index AR Solutions*

**SUPPORT ASSEMBLIES**

Rocket Rack vertical compact support assemblies are designed to simplify and improve the installation and support of conduit or basket tray installed overhead, especially in areas where space is a concern. Vertical compact support assemblies are available in single and double configurations with 6½-in. or 10½-in. slots to align with customer needs. Both are produced from ¼-in.-thick, corrosion-resistant 304 stainless steel and are supported by Rocket Rod (ordered separately). Both the single and double support assemblies are NSF certified to NSF 14159-1.

*Robroy Industries*



**MegaFlex UL**  
The best  
in power  
protection

2023 CATEGORY WINNER  
**Power Conditioning Equipment**



## CATEGORY WINNER: ELECTRIC VEHICLE SUPPLY EQUIPMENT

### EV CHARGING STATION

The EV series Level 2 electric vehicle charging station, which is available in 32A, 48A, and 80A, is suitable for any SAE J1772-compatible electric vehicle. The stations also offer optional access control via RFID cards. The charging station can be installed for indoor or outdoor use due to its thermoplastic, water-resistant enclosure and cable design that prevents freezing and cracking. The charging station comes with pre-attached input cables, and mounting hardware is included. Users can also purchase pedestal options. The EV Series charging stations are Energy Star certified and rated NEMA Type 3R.

*Leviton*



**EC&M**  
Product of the Year  
2023 Category Winner



### DRIVERS

SmartCurrent LED programmable drivers can be programmed in seconds with no need for a PC and driver cradle. Users can pull up the app on an Android-compatible device, connect it with the supplied USB cord, type in the output current they want, and click the program button. It has a programmable range of outputs in 10mA increments. The LED drivers feature linear and compact form factors with multiple output power options from 25W to 100W. They include a dim-to-off mode, which enables dimming to 1% for tuning of output current, and feature a 12VDC/200mA max auxiliary power output.

*Keystone Technologies*

### INSPECTION CAMERA

The WiSpy contractor-grade inspection camera is suitable for any hard-to-see inspections with its app-controlled variable focus lens, attachment to a variety of extensions, and an app for iOS or Android. The variable focus function on the app allows clear close-up viewing as close as 2.5 in. (6 cm) for finer detail. Using the app settings screen, users can view the image either in normal mode or “always up” mode. The rechargeable battery lasts up to 90 min. while in use and recharges to 90% in 60 min. The images with 720-p resolution provide real-time video feed and capture photos. The product has a built-in periscope mode and is designed with an integrated right-angle mount, eliminating the need for an adapter when peering over obstacles. The system includes a CFP-60 telescoping pole; a CWB-11 cell phone wristband; eight adapters and a USB charger; a gooseneck and rigid fishing extenders; a hook and magnet; spare O-rings; and a protective EVA carrying case.

*Jonard Tools*



### LIGHTING SYSTEM

The LEDVANCE LINK wireless connected, indoor/outdoor lighting system features LEDVANCE LINK Bluetooth mesh technology. It offers a three-step process that includes installation, commissioning, and control. For new installations, network-ready, connected luminaires are DLC Premium listed. For retrofits, NLC 5.0-listed field installable, plug-and-play controllers, sensors, and accessories are available for a wide range of compatible luminaires. Commissioning is done through a smartphone app. The system can be controlled either by the app or wireless wall switches.

*LEDVANCE*

### SURGE PROTECTIVE DEVICES

PANELGUARD, a family of surge protective devices (SPDs), can protect all types of loads fed from individual disconnects, subpanels, distribution panels, and service entrance locations. The SPDs are available in multiple configuration options and can deliver either four or seven modes of protection. They help prevent line noise harmonic distortion while protecting downstream LED lighting panels. Features include built-in EMI/RFI filtering, LED status indicators, an optional audible alarm, and a peak surge rating of up to 200kA. The SPDs are NEC and NFPA 780 compliant and UL 96A compliant, offering Type 1 and Type 2 surge protection. They also include a NEMA 4X enclosure for indoor or outdoor installation, an individually integrated disconnect, and thermally protected metal oxide varistor technology.

*Intermatic*



**EC&M**  
Product of the Year  
2023 Category Winner

### CATEGORY WINNER: BOXES & COVERS

#### BOX MOUNTING RINGS

Orbit universal square-to-octagon luminaire rings transition any 4-in. or 4<sup>11/16</sup>-in. square box into a 4-in. octagon (3<sup>1/2</sup>-in. O.C.) opening. Available in 5/8-in. through 1<sup>1/4</sup>-in. raised configurations, the 540X series is suitable for mounting luminaires, LED drivers, and other 40-compatible devices. Four dual-direction mounting tabs allow for luminaire installation in any orientation. When paired with a 4<sup>11/16</sup> in. square, 2<sup>1/2</sup> in. deep box, it offers greater box fill volume than a 40 box of the same depth. The rings, which are patent-pending and UL listed, are made of 16-gauge galvanized sheet steel.

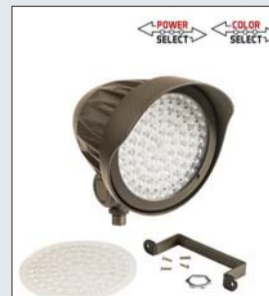
*Orbit Industries*

## CATEGORY WINNER: LUMINAIRES (OUTDOOR - AREA/SITE)

### LED FLOODLIGHT

The XFit Bullet floodlight is a compact luminaire with an LED light and pre-installed components, including the lens, glare shield, and knuckle mount. The product is equipped with Power and Color Select technology so users can field-adjust power output (25W/20W/15W) and color temperature (3,000K/4,000K/5,000K). The luminaire includes a built-in photocell, which turns daylight sensing on and off with a dip switch. The two optic lenses include a pre-installed NEMA 4H x 4V distribution standard lens and a NEMA 3H x 3V lens to swap it with. To switch the lens, users twist the on/off glass lens cap with the lens removal tool.

*Keystone Lighting*



**EC&M**  
Product of the Year  
2023 Category Winner





**FISH TAPE SYSTEM**

The FTF-1125 is a non-conductive fish tape dispenser and winder featuring a built-in handle, fastening/anchoring system, center compartment, and two furling systems. It is designed for pulling wire or cables through conduits, walls, or under carpets. This product is made from a non-conductive nylon-coated fiberglass rod, and the built-in reel handle provides a smooth payout/furling of the fish tape. The transparent backing allows users to see how much tape is left and can be removed via a metal lock pin to repair the tape quickly and easily. The case is made from a high-impact plastic material for increased durability. The system includes the reel; 100-ft fiberglass fish tape; standard flexible head; super flexible head; rolling flexible head; single pulling loop; two standard pulling eyelets; wide pulling eyelet; female-female join adapter; and two screw terminals.

*Jonard Tools*



**TAPE LIGHT CONNECTORS**

The AmpChamp corner connectors are designed for connections requiring a 90° turn with tape lights. They can accommodate tape lights as narrow as 0.4 in. (10 mm). The UL-listed LED terminal-style tape light connectors can handle high-current applications due to their copper conductor components. The connectors' 8A limit meets the need for a high-amperage connector, enabling longer runs of tape lights on a single connector. The connectors are compatible with solid core, tinned, and stranded wire. The corner connector includes four spade connectors for use with stranded wire as well as a screwdriver. The product can be used for toe kicks, coves, L-shaped cabinets, and other installations with tight turns.

*Alloy LED*

**CATEGORY WINNER: LUMINAIRES (RETROFIT UNITS)**

**RETROFIT LIGHTING KIT**

The XFit center basket retrofit kit with integrated SmartLoop wireless lighting control commissions programs in minutes, and no additional control wiring is needed. The troffer retrofit kit includes Power and Color Select technology, which allows for adjustable lumen output and color temperature to fit the space. A 0V-10V dimmable driver provides consistent lighting. These kits install directly into the existing luminaire body and require a 0V-10V wiring connection, eliminating the need to install a completely new luminaire or break the plenum to add a controller.

*Keystone Technologies*



**EC&M  
Product of the Year  
2023 Category Winner**

**FLASHLIGHT**

Stinger Color-Rite enhances visualization in low-light conditions. It features the company's Color-Rite technology, which allows users to differentiate between colors in dark environments while on the job. The light specifically uses a high-color rendering index (90 CRI) LED, allowing workers to see the color spectrum as they would in natural light. The light provides a softer, warmer beam to assist with identifying subtle details and colors in various work applications and prevents glare and fatigue. The light comes with three modes and a strobe. It's rechargeable, water-resistant, and durable with a polycarbonate lens and a scratch-resistant coating.

*Streamlight*



**Color-Rite**



**BOX RING COVERS**

The universal protective covers fit most 1-gang and 2-gang device rings as well as most multi-gang and adjustable mud rings. UPC-12MA prevents mortar, drywall compound, debris, paint, and router bits from entering the junction box or damaging conductors/wiring devices. The gangable cover features snap-off corner tabs for trouble-free seating in two-gang rings. The keyhole slots easily slide onto device ring screws. It protects most receptacle types as well as toggle or Decora-style switches. The product is reusable and made in the United States.

*Orbit Industries*

**SURGE PROTECTIVE DEVICE**

SurgePro THOMESURGE is a UL-listed Type 1 SPD designed to help protect sensitive electronics and appliances against power surges in residential applications. Its lightweight and compact design enables installation through a usable side knockout without occupying a breaker space. The LED light indicates the operational status of the SPD. Able to be installed with load centers of any brand, it helps users to comply with industry standards and 2020 NEC Sec. 230.67 surge protection requirements for new home construction or renovation projects. Other specifications include 36kA per phase protection; Type 1; 120V/240V and 120V/208V AC; 200kA SCCR; 10kA nominal discharge; and 50- to 60-Hz operating frequency.

*ABB*



**TUBE LIGHT**

The DirectDrive DX2 LED tube with Color Select technology features five color temperatures, including 3,000K, 3,500K, 4,000K, 5,000K, and 6,500K, and can be easily shifted between the CCTs. Its single- or double-ended wiring options simplify installation, and it uses both shunted and non-shunted sockets for an LED upgrade from T8 fluorescent tubes. The Color Select tube is part of a line of DirectDrive DX2 UL Type B line-voltage tubes, which can provide up to 50% more energy savings than standard F32T8 lamps, according to the company.

*Keystone Technologies*

## CATEGORY WINNER: POWER CONDITIONING EQUIPMENT

### UPS

MegaFlex UL is a 3-phase, 480V double-conversion uninterruptible power supply designed for critical high-density computing environments, such as data centers for colocation, hosting cloud, and telecommunication centers. Its topology is monolithic based, using 400kW power modules with power availability from 1,200kW to 1,600kW in one UPS cabinet configuration. Flexible system architecture ready, the MegaFlex UL supports N+1, 2N, 2N+1, N+N, 3N/2, and catcher system configurations. It also provides easy front and top access, modular sub-assemblies, fast replacement of consumable components, and remote monitoring.

**ABB**



**EC&M**  
Product of the Year  
2023 Category Winner



**EC&M**  
Product of the Year  
2023 Category Winner

## CATEGORY WINNER: LIGHTING CONTROL EQUIPMENT

### MOTION SENSING DIMMER

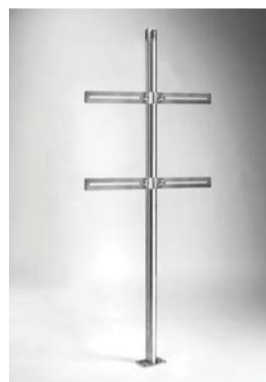
The Wi-Fi-enabled Decora smart motion sensing dimmer can be set to turn lights on when motion is detected and the room is occupied, and it turns lights off when the room is unoccupied. Installers can select between occupancy and vacancy sensing modes to meet Title 24 without using the app. With a built-in sensor with up to 180° field-of-view and 900 sq ft of major motion coverage, the device provides full-range dimming for dimmable light bulbs and magnetic low-voltage lighting. On/off control is also available for non-dimmable lights, such as fluorescents in garages. The dimmer also works with Anywhere Companions to support wire-free, 3-way/multi-location applications, and it can be voice controlled via Amazon Alexa, Hey Google, or Apple Home/Siri.

**Leviton**

## WIRELESS CONTROLLER

The wireless smart scene controller, an addition to the company's Smart Lighting with Netatmo platform, provides a way to add on-wall, one-touch control of up to four full lighting scenes with no wiring required. Paired with an installed Smart Lighting with Netatmo system and powered by an included long-lasting battery, this smart scene controller mounts to any wall or surface with included adhesive. Users then create and edit their personalized lighting scenes within the company's Home + Control app. Each system starts with a smart gateway to establish its network, then includes a selection of wired and plug-in smart switches, dimmers, and/or outlets. Users then further customize the system to their homes' specific needs with the Wireless Smart Scene Controller and other wireless devices for the Netatmo platform. Voice command and connectivity with other smart products are available through Amazon Alexa, Google Home, and Apple HomeKit.

**Legrand**



### BRACKETS

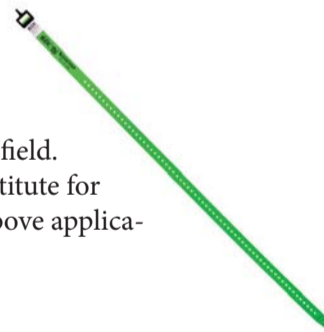
Double-mount brackets are designed for use with Rocket posts, floor-mounted assemblies, providing support for electrical and mechanical raceways. The typical locations where Rocket posts are used are in or near work/processing areas, along conveyors, and in other locations in the facility where attachment to a support structure is not available. Common uses include the support of electrical conduits, process piping, basket trays, or equipment such as disconnects, HMI panels, or wash stations. The double-mount brackets allow installation on both sides of a single post.

**Rocket Rack by Robroy Industries**

## INSULATED WORK STRAP

The BuckStrap is a non-conductive tie-down strap designed to secure insulated blankets to energized conductors, potheads, poles, and other components in the field. The non-stretch and non-absorbent properties ensure the product is a safer substitute for wire ties, pee lines, electrical tape, etc. when used with blanket pins and in the above applications. The strap meets and exceeds ASTM D-149/70kV (applied voltage test).

**Buckingham Manufacturing**



## LIGHTING CONTROLLER

The SmartLoop screw-in controller with SmartPort technology works with a variety of luminaires, including linear, round high bays, and area lights compatible with SmartPort. One sensor can screw into multiple luminaires to add wireless control with microwave motion, photocell, or RF options. The SmartPort screw-in technology allows users to insert the sensor and screw it into the compatible socket. It uses Bluetooth mesh technology for reliable, secure wireless communication. The controller commissions quickly and adjusts with the SmartLoop smartphone app.

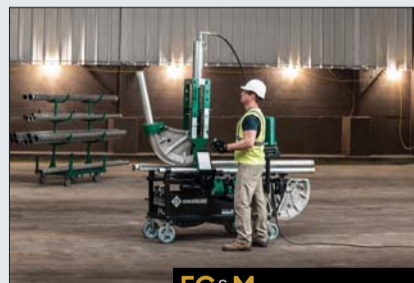
**Keystone Technologies**

## CATEGORY WINNER: TOOLS (EQUIPMENT)

### BENDER

The 881GX hydraulic bender with a mobile bending table is designed to increase productivity and improve ergonomics when bending large-diameter conduit while providing anti-theft protection. Paired together, the bender and table deliver up to six times faster setup in an ergonomic design compared to the company's previous 881CT model, according to the company. The bender features an extended yoke and spring pins. Follow bars are up to 55% lighter than the company's pre-existing 881CT model, and all accessories are stored in ergonomic lifting positions on the mobile table, reducing strain by up to 30%, according to the company.

**Greenlee**



**EC&M**  
Product of the Year  
2023 Category Winner

**LIGHTING CONTROLS SYSTEM**

The NX Dual Tech OMNI (part of the company’s lighting controls system) features occupancy detection, an integral photocell to perform day-lighting control, and flexible deployment. The product comes in white, gray, and black. It hosts a flexible architecture and can be deployed in wired, wireless, or hybrid configurations alongside the company’s room devices or connected lighting. The integrated 2.4-GHz wireless mesh enables the OMNI to communicate with wireless-enabled luminaires while communicating over the integrated RJ45 ports to other NX devices. The product comes equipped with the company’s proprietary IntelliSCOPE technology, which allows the user to see ultrasonic and PIR data in real-time through the lighting controls app. This allows the user to adjust the sensitivity accurately and reduce false detections remotely.



*NX Lighting Controls (HLI Brand of Current)*



**IMPACT SOCKET SET**

The 7-piece flip impact socket set includes 10 sizes combined into five sockets and two nested adapters. The two nested adapters allow for dual drive (¼-in. and ½-in.) capability. The sockets are designed for use with an impact driver, including the company’s impact wrench and impact driver. The flip feature allows for quick changes between sizes and reduces the number of tools in the tool bag. All sockets and adapters are stored in a convenient case for easy portability.

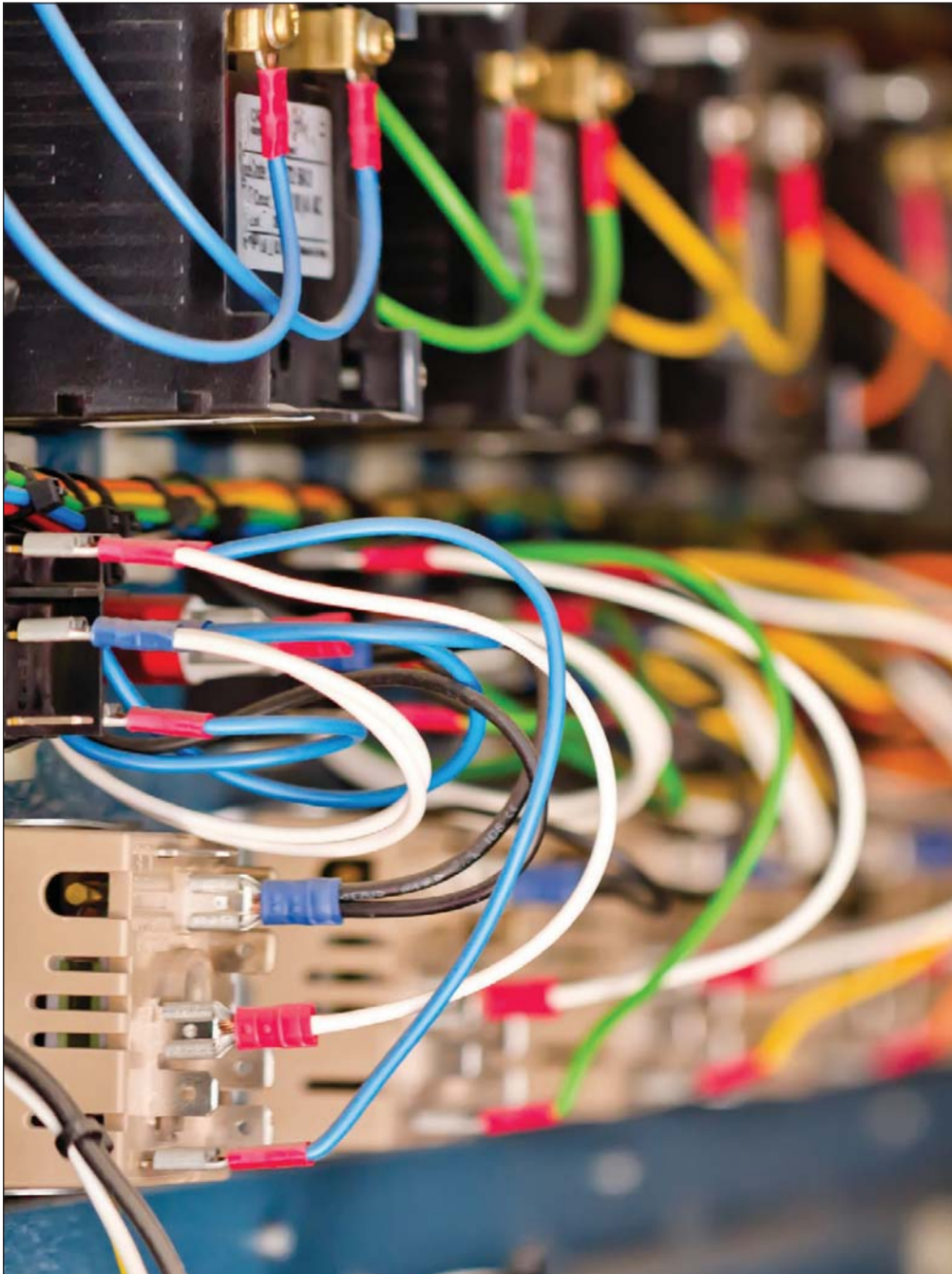
*Klein Tools*

**PVC FITTINGS**

PVC-coated liquidtight fittings are often connected directly to a conduit body to transition from LFMC to PVC-coated GRC. The addition of the transition adapter eliminates the risk of exposed threads where corrosion can occur and maintains the environmental rating integrity of the system. The use of the PVC transition adapter reduces the number of components that are required to transition raceways. The adapter fits snugly over the female end of a conduit body (sealing sleeve removed) allowing for 3½ threads of engagement of the LT male threads into the conduit body.



*Robroy Industries*



**EC&M**®

**Get your own  
FREE subscription**

EC&M is the industry’s go-to, technical connection for electrical professionals in electrical contracting companies, industrial plants, commercial/institutional facilities, and engineering firms.

Each month you’ll get the latest technical and operational information surrounding the National Electrical Code, electrical design methodologies, installation methods, trends and techniques, and maintenance procedures.

Sign up now at:  
[ecmweb.com/NewSub](http://ecmweb.com/NewSub)

## EMERGENCY DOWNLIGHT

AdvantaEMRG is a fully operational emergency recessed downlight with integrated emergency components. The all-in-one unit has all the equipment for recessed emergency lighting, built in a pre-installed and pre-wired 5W-90 min LED Smart Safe emergency driver compliant with CEC T20. The included test button/indicator light in the downlight housing eliminates complications or bad siting of a separate button in the ceiling faceplate. The pre-wired dimming driver and pre-installed emergency battery backup feature a quick-connect hookup with a built-in junction box for easy power connection. The downlight has airtight, Type IC-rated construction and is available in three available sizes and three interchangeable trim rings in different finishes.

*Keystone Technologies*



**EC&M**  
Product of the Year  
2023 Category Winner

## CATEGORY WINNER: LABELERS & PRINTERS

### LABELING TOOL

The Pro Label Tool mobile app enables users to create, edit, and print labels on demand. The free app helps speed and facilitate the labeling process by connecting Wi-Fi-enabled Brother P-touch industrial printers with smartphones and tablets. The interface lets users choose, edit, and print professional-quality labels with just a few taps. Users can import existing label information from their database and serialize labels quickly and efficiently. The labels are designed with network address information, logos, barcodes, QR codes, and more. Users are supported with the app's automatic connectivity to the company's cloud server, keeping their system up to date with the latest designs and templates. The app can connect with CSV databases, and no computer or printer driver is required.

*Brother Mobile Solutions*

## CATEGORY WINNER: TOOLS (HAND)

### SOCKET DRIVER

The 7-in-1 impact flip socket driver features six interchangeable hex sizes plus a bit holding feature — all stored on the driver shaft in any order or orientation. This blade can quickly and easily change between a screwdriver handle (included) and an impact driver, meaning work can get done faster. The multi-function ¼-in. socket has both shallow and deep configurations for added versatility. Rare-earth magnets securely hold the bits and hex head fasteners in place, and the sockets are color-coded for easy identification. Detachable sockets allow for easy removal of metal shaving from the magnet. This patent-pending design is suitable for tight spaces, low clearance, and long-reach applications.

*Klein Tools*



**EC&M**  
Product of the Year  
2023 Category Winner



## BAG

Constructed from heavy-duty waterproof vinyl and Cordura material throughout, the BuckPack Pro features a removable separator to keep clothing/gear away from other gear that may be dirty. High-grade zippers throughout create easy access. It includes a name tag/company tag pocket. The backpack shoulder straps can be packed away into a separate storage pocket in the back pad when not in use. The back pad pocket stores handsaws, laptops, paperwork/binders/folders, etc.

*Buckingham Manufacturing*

## CATEGORY WINNER: RACKS & ENCLOSURES

### HMI COVERS

The patent-pending Stahlin SolarShield HMI covers are designed for use with all enclosure material types. The non-metallic covers are suitable for protecting HMI screens from UV and harsh environmental conditions and are the industry's only non-metallic HMI covers with side shields, according to the company. The product is suitable for demanding applications in non-hazardous industrial and commercial markets. The covers fit standard 10 in. x 8 in. and smaller HMI screens and maintain a NEMA 4X rating of enclosure and screen. Universal covers can be used with either non-metallic or metallic enclosures.

*Stahlin by Robroy Industries*



**EC&M**  
Product of the Year  
2023 Category Winner



## MULTIMETER

The MM450 multimeter is a TRMS auto-ranging slim multimeter that measures AC/DC voltage, AC/DC current, and resistance. It can also measure temperature, capacitance, frequency, and duty cycle, and it tests diodes and continuity. It features a high-visibility, reverse-contrast display with an optical sensor to automatically optimize viewing in dark or bright ambient light. The slim profile of the MM450 makes this meter almost the size of a cell phone. The meter has a rugged industrial design, easy access to fuse, and lead-alert protection with green LEDs to avoid blowing fuses.

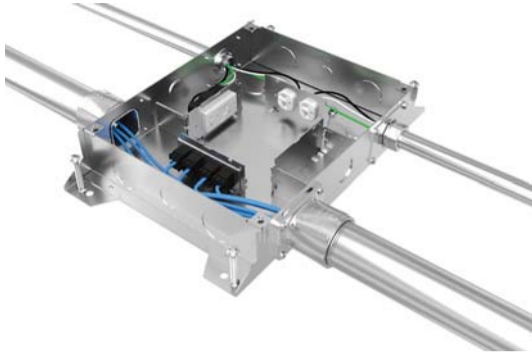
*Klein Tools*

## LED AREA LIGHT

The LED area light ranges from 30W to 420W and is equivalent to 150W up to 1,500W HID lamps. These luminaires are designed with all optic lenses (T1-T5 and FWT) and are suitable for various applications, including high-mast, area, and tennis court lighting. The luminaire is manufactured with a built-in 20kV/10kA surge protection device, input voltage range from 120VAC to 480VAC, high CRI, and 165 lm/W. The patented luminaire is compact and comes with a 10-yr/100,000-hr warranty.

*Olympia Lighting*





**FLOOR BOXES**

RFBA series floor boxes offer recessed activations for power and data services to open space areas or directly to workstations. Users can choose from an assortment of box sizes from 2 gangs to 10 gangs and between a round or rectangular style cover. The consistent box design increases speed and efficiency on project installations. No matter what size is selected, components and accessories work across the entire line interchangeably, and users can mix and match as needed for a project.

*Legrand*

**CATEGORY WINNER: LAMPS/LEDS**

**LED LAMPS**

Energy-efficient, high-lumen LED filament lamps are designed to be suitable replacements for HID metal-halide lamps and corn cob lamps. The classic HID shape fits into existing luminaires. Bypass application means that no ballasts are needed for operation. Due to its smaller design, it can screw into existing sockets and fit in open or enclosed luminaires. The bulbs weigh less than alternative corn cob lamps, easing installation. The LED lamps are said to save 75% in energy, according to the company.

*TCP*



**EC&M  
Product of the Year  
2023 Category Winner**



**ENERGY METER**

Shelly Pro 3EM is a Class B accuracy (IEC 62053-21) DIN rail 3-phase energy meter with Ethernet, Wi-Fi, Bluetooth, and Modbus TCP support. Users can passively monitor three monophasic, split single-phase, 2-phase, and 3-phase circuits with support for neutral, allowing users to calculate produced and used energy for each phase. The meter reports accumulated energy as well as instantaneous voltage, current, and power factor per phase in real time. An optional AddOn module allows contactor control for any circuit measured. Each Pro 3EM can store up to 60 days of historical data on-device at a 1-min. resolution for each phase.

*Allterco Robotics*

**EXPLOSION-PROOF RECEPTACLES**

The Ark-Gard ENRX explosion-proof NEMA receptacles feature a new cover with a retrofit design, providing customers with the option to purchase the cover and install it on their existing back box to get the NEMA 4X rating. The new design provides a variety of options and can be used for various applications in demanding conditions. The receptacles are capable of a broader temperature range; include captive screws for Class 1, Division 2 environments; and can be panel mounted.

*Eaton*



**EC&M  
Product of the Year  
2023 Category Winner**

**CATEGORY WINNER:  
PROTECTIVE DEVICES  
ELECTRONIC CIRCUIT  
BREAKER SYSTEM**

CAPAROC, a customizable electronic circuit breaker system, enables the distribution of 12VDC-24VDC power. The system consists of various power modules, circuit breakers, current rails, and potential distribution modules. An online configurator allows users to create a tailored system specific to their needs. The power module, which is the brain of the system, can be interfaced via various communications protocols. It monitors trip status and provides remote reset for tripped circuits. When a circuit draws more than 80% of the nominal setting, it alerts the user so preventative maintenance measures can be taken. The PROFINET power module measures individual channel currents and on/off control. A power module with IO-Link is also available.

*Phoenix Contact*



**STANDBY POWER SYSTEMS**

The ZBTS T-series is equipped with a full-color touchscreen HMI and is compatible with Ekip Connect software to ease commissioning and operation. It maximizes flexibility with a wide 200V to 480V range, an array of standard programmable functions, and IO. It also simplifies service with modular components and a quick swap HMI, 95% fewer spare parts than the legacy Zenith offering, the company's HMI navigation and programming tool common to all LV components, and an optional dual withdrawable bypass for 100A to 1,200A range enables maintenance of both switches. Performance is optimized through high time-based withstand and closing ratings (WCR) and even higher coordinated WCR, a minimum of 100kA in each frame. ZBTS T-series also has short-time withstand ratings in every frame and a fast controller response to outage recovery and fast switching.

*ABB*

**CATEGORY WINNER: CONDUIT, RACEWAYS & WIREWAYS**

**CABLE CHANNEL**

The B-Line series KwikSplice cable channel, which features a dovetail splice design, expedites installation and improves versatility in a variety of industrial and commercial applications, according to the company. Unlike other instrumentation channel trays, it can be cut and spliced at any point along the channel, allowing for field modifications. It comes in 20-ft spans, requiring up to 50% fewer supports than shorter span cable channels and resulting in savings, according to the company.

*Eaton*



**EC&M  
Product of the Year  
2023 Category Winner**

**CATEGORY WINNER:  
PORTABLE TEST & MEASUREMENT EQUIPMENT**

**CIRCUIT TRACER KIT**

The advanced circuit tracer kit is a professional tracer for energized and non-energized breakers, fuses, and wires. When the transmitter is connected to a circuit, the receiver's sensitivity can easily be adjusted to detect the transmitted signal through drywall, cement block, and underground. Versatile applications include tracing wires, conduits or pipes, or even a single wire in a bundle. Audible beeping and visual indicators on the receiver denote signal strength, and the receiver features a flashlight for illumination and NCV function to test if wires are energized. The kit includes a transmitter, receiver, blade, ground prongs, alligator clips, 3-ft and 20-ft lead adapters, AC plug leads, all required batteries, and a hard carrying case with a handle for convenient transportation and storage. The unit features a 6-ft drop protection rating.

*Klein Tools*



**EC&M  
Product of the Year  
2023 Category Winner**

**PANELS AND SHELVES**

Side panels and weight distribution shelves are designed for OEMs/installers and are used with polycarbonate enclosures to add installation flexibility. They increase mounting space and provide solutions for the installation of heavy components. The aluminum side panels allow for the mounting of components on enclosure walls and reduce the need to increase the enclosure size to accommodate additional components. This enables customers to use smaller enclosures in applications requiring tight spacing. The weight distribution shelf provides a rugged support system for heavy equipment in polycarbonate enclosures. It is suitable for supporting a power supply, battery, or heavy equipment.

*Attabox by Robroy Industries*



**LED REPLACEMENT LAMPS**



The 480VAC cluster LED lamps range from 30W to 500W and are equivalent to 150W up to 1,500W HID lamps. They are suitable for open and enclosed luminaires and are designed to fit existing luminaires with a perfect form factor. The lamps operate from 208VAC to 480VAC; have a built-in 20kV/10kA surge protection device; measure up to 80,000 lm; and are available in CCT from 2,200K up to 5,500K.

*Olympia Lighting*

**CLIMBER KIT**

The BuckAlloy American Climber Kit features the company's BuckAlloy Aluminum climbers in an American flag design. The climbers are red, white, and blue with an American Flag Hydro-Dip. The Gaff Ridge Position Technology keeps gaff pointed toward the heart of the pole, reducing cutouts. The climbers are rated to 350 lb and exceed ASTM F887 standards. The dowel and screw design allows for easy gaff change out, and the T-shaped aluminum ribbed construction adds strength to the climber.

*Buckingham Manufacturing*



**CATEGORY WINNER: V/D/V TEST & MEASUREMENT EQUIPMENT  
TESTER**

The TVR10G Pro has been designed to test and troubleshoot Gigabit Ethernet LAN. The product provides Voice/Data/Video versatility with flexible Ethernet speed options, including 10BASE-T, 100BASE-T, and 1000BASE-T. The tester can quickly identify LAN device type, speed, and duplex status (full/half). Power over Ethernet can be detected using only the primary tester. The kit's remote probe simplifies cable location tracing using audible tones for all four pairs. The tool can be used to locate faulty hubs, PCs, or cable connections impacting network performance or causing outages. The smart tester can be used inline between LAN devices to find actual negotiated speeds and the duplex status of a link with bright LEDs to provide at-a-glance answers. A cable-type simulator takes the guesswork out of whether a straight-through or crossover cable is needed. Users can verify cable pairs and test for port continuity, opens, shorts, and splits. The product comes with two RJ45 cables, RJ45 to coax adapter, 9V batteries, and a case.

*Triplett Test Equipment & Tools*



**EC&M  
Product of the Year  
2023 Category Winner**



**ENERGY STORAGE SYSTEM**

The SimpliPHI energy storage system is a vertically integrated, scalable system designed to store, manage, and control energy from multiple generation sources. It is composed of three core components: a 6kW SimpliPHI inverter, a 4.9kWh battery, and the EnergyTrak control management software. The new inverter offers versatile applications that integrate solar, generator, and/or grid power in both AC and DC coupled configurations. The inverter can scale from one to nine units, creating redundancy and increments to scale power outputs for electrical loads. It is also suitable for backup power to subsidize utility costs or to run a power system completely off-grid. The 4.9kWh battery is enhanced by a battery management system with closed-loop communications that integrate with the 6kW inverter and EnergyTrak management software, a monitoring and control system that allows users to manage their energy usage through a mobile app.

*Briggs & Stratton*

**RESCUE SYSTEM**

The self-rescue system features the FCX descent device, which allows smooth modulation so the user can easily control the speed of descent. The descent device will brake if the user releases the lever and stops pulling or pulls the lever to its full extension. The system is packed in a weather-resistant bag that will stand up to an electric arc flash. Two retro rappelling straps are to be used with an H-style harness without rappelling loops or an X-style harness without a sternal attachment loop. The 401SRKQ1-100 includes two pairs of retro rappelling straps and two descenders. It meets ANSI Z359.4 requirements, and the bag material withstands 40 cal/cm<sup>2</sup> electric arc exposure.

*Buckingham Manufacturing*

**NEW**



# FASTER ROUGH-INS, MOST COMPACT



**2X FASTER THAN  
HAND DRIVEN STAPLES**



### M12™ CABLE STAPLER KIT

2448-21  
Tool-Only Also Available



### MILWAUKEE® 1" INSULATED CABLE STAPLES

MNM1-600  
Only Compatible with  
M12™ Cable Stapler (2448)

**LEARN MORE**



or visit <https://qr.mke.tl/2de9w>

[milwaukeetool.com](http://milwaukeetool.com)



**M12**

**PORTABLE PRODUCTIVITY  
TRADE FOCUSED  
SYSTEM WIDE**

# Finish installation faster with Hubbell innovation

*We have the awards to prove it!*

## **HUBBELL**<sup>®</sup> Wiring Device-Kellems



**2023 Wiring Devices Winner**

### **Twist-Lock**<sup>®</sup> **EdgeConnect**<sup>™</sup>

Plugs, connectors, receptacles, and inlets

Improve termination time 65–80% with our patented screwless technology. Easier—no torque screwdriver needed. Simply insert the wire, press the plunger, done! Strong levered springs hold wires secure even in demanding environments.

## **BURNDY**<sup>®</sup>



**2023 Connectors &  
Terminating Devices Winner**

### **Qikshear**<sup>®</sup>

Terminals and splices

Simplify conductor installation with our mechanical connectors. They eliminate the need for compression tooling or torque wrenches. With a simple Allen head socket wrench, the bolt shears off at correct clamping with no exposed edges. Perfect for renewables applications.

No matter your problem, innovative Hubbell technology solves it. Terminate and install conductors or devices faster and more securely.

Find out more at [hubbell.com](https://www.hubbell.com)



Proud members of the Hubbell family