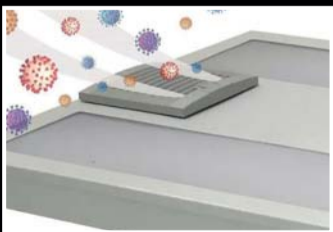


EC&M[®] Product of the Year

2021 Competition





Contractors who use Service Wire's Feeder MC report **50-70% savings** versus pipe and wire.



Scan Code to see cost comparison.

Feed your bottom line with **FEEDER MC.**

Rising conduit prices got you down?
Eliminate the hassle with Feeder MC.

All the protection and durability of conduit with the labor- and cost-savings you need to be competitive. **The advantages don't end there.**



Eliminate conduit, elbows, costly offsets, and couplings



Feeder MC bends easily, without damaging inners



Doesn't require specialty cutting or bending tools

For more information, visit servicewire.com/mc or call:

800-624-3572
Culloden, WV

800-231-9473
Houston, TX

877-623-9473
Phoenix, AZ



CAST YOUR VOTE!

HELP *EC&M* SELECT THE 2021 “PRODUCT OF THE YEAR” WINNER

EC&M readers, it's time to vote. Please help us identify the three most innovative and valuable products introduced to the market last year. The deadline to vote for this year's contest is June 28, 2021. To cast your vote, visit www.ecmweb.com between May 24 and June 28 to view a photo gallery of the 31 category winners. There, you can read product descriptions and view a product photo. After reviewing the category winners, help select the top winner by voting for your favorite product. As an added incentive, three lucky voters will be randomly chosen to receive a \$100 Amazon e-gift card.

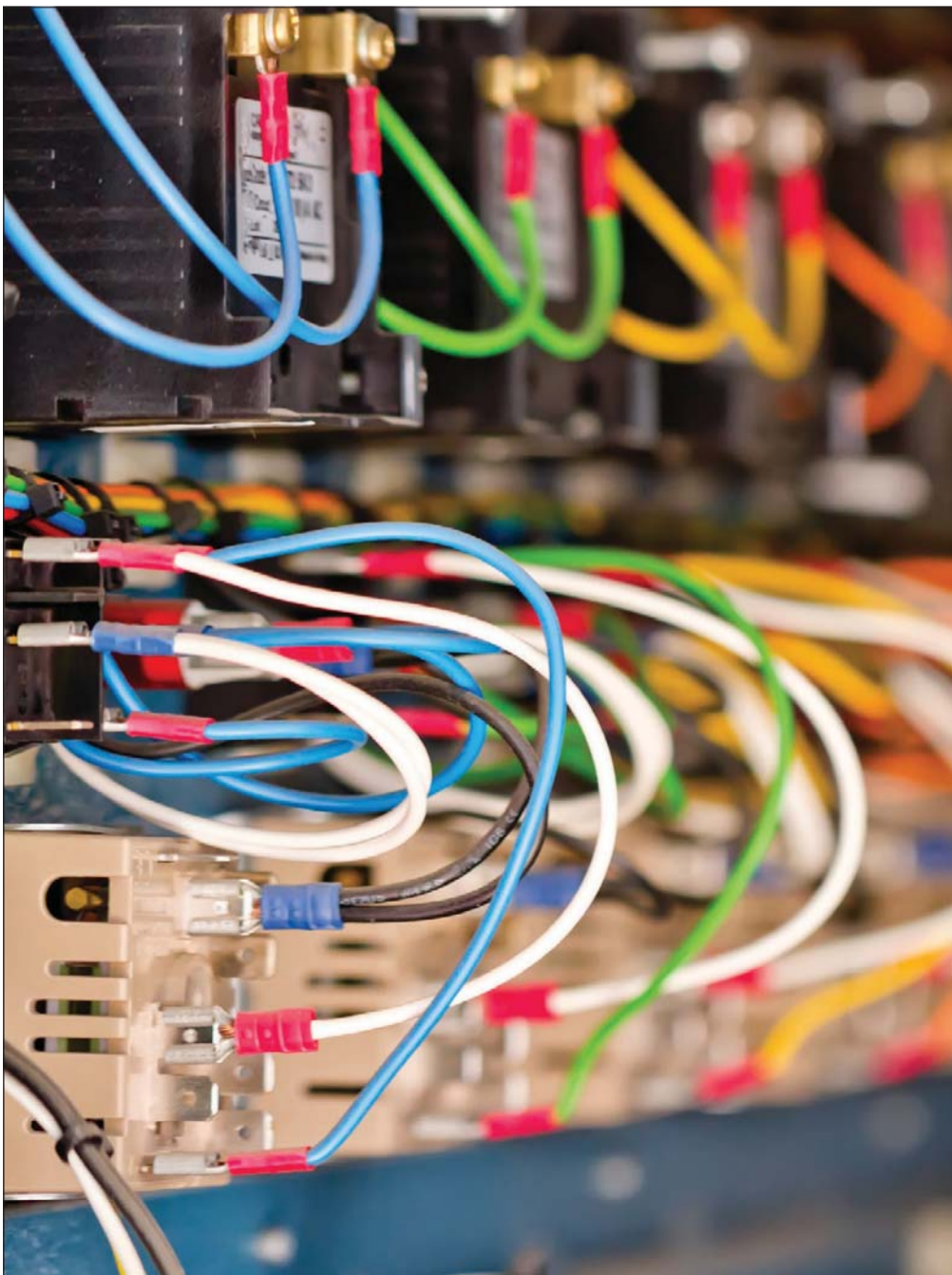
EC&M established the Product of the Year Competition in 2001 to recognize excellence in new product development in the electrical industry. More than two decades later, this prominent awards program continues to showcase the most innovative products of the past year, recognizing the talent and commitment of those involved with all aspects of development. *EC&M* is honored

to bestow these awards on inventive products each year that ensure electrical professionals are able to do their jobs more efficiently and effectively.

Products eligible for this year's contest were those introduced to the market between Jan. 1, 2020, and Dec. 31, 2020. Out of the 93 product entries received, a panel of industry expert judges narrowed down the field as part of phase one of the competition. Ranking each product based on a uniform list of scoring criteria, the group ranked each entry, ultimately identifying 31 category winners (view the entire list on page 2) based on innovation and the ability to save end-users time and enhance productivity.

These 31 finalists will now compete for the 2021 Platinum, Gold, and Silver awards, which will be determined by *EC&M* subscribers in an online voting process administered on the *EC&M* website (www.ecmweb.com) beginning May 24. You can also find accompanying photos and product descriptions of all 93 entries in the pages of this special supplement.

EC&M **Product of the Year** **2021 Competition**



EC&M[®]

Get your own FREE subscription

EC&M is the industry's go-to, technical connection for electrical professionals in electrical contracting companies, industrial plants, commercial/institutional facilities, and engineering firms.

Each month you'll get the latest technical and operational information surrounding the National Electrical Code, electrical design methodologies, installation methods, trends and techniques, and maintenance procedures.

Sign up now at:
ecmweb.com/NewSub

2021 CATEGORY AWARD WINNERS

<u>CATEGORY</u>	<u>MANUFACTURER</u>	<u>PRODUCT</u>
Boxes	Hubbell RACO.....	Dugout Transition Box
Computers & Software.....	Electro Industries/GaugeTech	EnergyPQA.com Energy Management Cloud Solution
Conduit, Raceways & Wireways.....	Orbit Industries.....	Pedestal Post
Connectors & Terminating Devices.....	Greaves.....	SNAP! Connectors
Construction Equipment.....	Soltech Lighting.....	TWINKO Mobile Solar Light Tower
Fasteners, Hangers & Accessories	Mag Daddy.....	Dakota Smart Nut
Lamps.....	Olympia Lighting	UVC In-Duct LED Disinfection Lamp
Lighting Control Equipment	Lutron Electronics.....	Limelight Twist Lock Radio Daylight Module
Lighting Control Systems	Lutron Electronics.....	Athena Dynamic Lighting System
Luminaires (Disinfection).....	Hubbell Lighting.....	SpectraClean 254 Germicidal Lighting
Luminaires (Harsh & Hazardous Location)	Ericson Manufacturing.....	Linear LED String Light
Luminaires (High-Bay).....	Acuity Brands Lighting.....	Compact Pro High Bay Luminaire
Luminaires (Outdoor – Area / Site).....	Acuity Brands Lighting.....	ARC LED Lighting
Luminaires (Surface Mount).....	Axis Lighting.....	BalancedCare Undercabinet Light
Luminaires (Suspended).....	American Linear Lighting.....	Linear Express LED Luminaire
Monitoring & Control Equipment.....	Allterco Robotics US.....	Shelly 3EM Energy Meter
Motors, Drives & Motor Controls.....	Mennekes Electrical Products	CDS Series Sloped Top Non-Metallic Disconnects
Portable Test & Measurement Equipment	Fluke.....	Fluke T6-1000 Electrical Tester
Power Distribution Equipment	Leviton	LEV Series Mechanical Interlock with Inform Technology
Protective Devices	ABB	SACE Tmax XT7 Molded Case Circuit Breaker
Racks & Enclosures	Hubbell Wiring Device-Kellems	inREACH Plenum Rated Cord Reel Enclosure
Safety Equipment & Workwear	Polartec	Westex Polartec Power Dry FR Fabric
Security Equipment & Systems.....	Hubbell Lighting.....	SpectraSAFE Integrated Surveillance Lighting System
Specialty Products	Ferret Tools	Ferret Lite, Pro, and Plus Wireless Inspection Cameras
Tools (Accessory Items).....	Greenlee.....	GSB Series Step Bits
Tools (Equipment).....	Greenlee.....	G10 TUGGER 10,000 lb Puller
Tools (Hand)	KNIPPEX Tools	StepCut Cable Shears
Tools (Power).....	BURNDY.....	PATRIOT PAT750T3 Battery Crimper Series with T3 Technology
V/D/V Test & Measurement Equipment.....	Tripp Lite	Robotic Fiber Panel System with Mini Chassis
Wire & Cable.....	Atkore	MC Glide Aluminum Clad Cable
Wiring Devices	Eaton	Wi-Fi Smart Devices

REDUCE UNPLANNED DOWNTIME

Get notified BEFORE a device failure

LEV Series Mechanical Interlocks with Inform Technology – **the ONLY** mechanical interlocks available with remote monitoring. 24/7 access to device data including:

- Liquid accumulation
- Enclosure temperature and humidity
- Ground continuity
- Line- and load-side voltage values
- And more

Learn more at leviton.com/levseries



 inform™

CORD REELS

inREACH Industrial Cord Reels, which are designed to blend in with their surroundings, are now available in all black and all white, including the cable color. Suitable for use in outdoor applications or indoor washdown environments, the products feature cast-aluminum construction to provide corrosion and impact resistance. The positive latch mechanism automatically maintains cord lengths, while a ratchet lock applies constant tension.

Hubbell Wiring Device-Kellems



POWERED DIELESS CRIMPER

The PATRIOT PAT444ST3 11-ton dieless crimper features a 355° rotatable C-Head design for working overhead and in limited access areas. The tool, which is qualified on both UL and ANSI connections, has two methods to determine good/bad output force: audible and red/green LED light indicators. Features include a safety trigger guard to prevent accidental trigger engagement, an LED work light for illumination, and the company's T3 intelligence.

BURNDY

HYDRAULIC MULTI-TOOL

The GRE-6 Hydraulic Multi-Tool features heads to handle crimping (BG, D30, Quad Point), cutting (ACSR, CUAL) and knockouts (½ in. to 4 in.) The company's QuickChange System allows users to switch between interchangeable heads for cutting and crimping. Interchangeable head options include soft and hard metal cutting versions, dieless and U-die crimping versions, and a knockout punch model for stainless and mild steel. Powered by the Makita 18V LXT battery platform, the product has a 7-yr warranty.

Greenlee



ROOM CONTROLLER

The NX Distributed Intelligence FX Room Controller features a built-in time clock for scheduling of room controls without the need for additional network components or a central time server. Through plug-and-play installation, the NX-enabled luminaires, occupancy sensors, daylight sensors, and other manual controls can be connected through SmartPORT technology and optimized through self-configuration. The controller automatically recognizes the connected devices and assigns the room controls to a logical lighting sequence. Up to 32 room controllers can be connected through the FX bus.

Hubbell Lighting



POWER DISTRIBUTION UNITS

Monitored-by-Outlet Power Distribution Units (PDUs) are designed to mount vertically in standard 19-in. racks to perform outlet-level current monitoring. The power consumption of an individual connected device in a data center, computer room, or other IT environment can be monitored locally and remotely in real time. Available in single-phase and 3-phase models, the PDUs feature an HTML5-based LX Platform network interface for remote monitoring from any location. In addition, the Auto Probe feature can detect lost connectivity and automatically power cycle outlets to reboot equipment.

Tripp Lite



JUNCTION BOXES

The preassembled UMA-LVBS with Square Box and Device Ring is a ready-to-install solution for common switch and receptacle rough-ins. The assemblies mount directly to the open or closed sides of a wall stud, with integrated back support for 2½-in. and 3½-in. stud depths (users can extend to 6 in. with the company's FS-456-EXT). In addition, the assemblies can be mounted between wall studs or ceiling joists using the company's SSB-T5. The 2⅛-in.-deep square box includes a 10-in. grounding pigtail. Certain models come with 1-gang and 2-gang device rings.

Orbit Industries

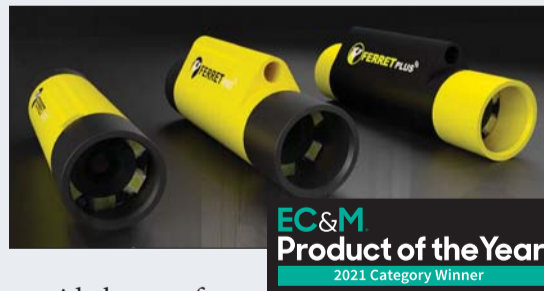
CATEGORY WINNER: SPECIALTY PRODUCTS

WIRELESS INSPECTION CAMERAS

Three models have been added to the company's line of wireless inspection cameras. The Ferret Lite is a general-purpose camera that provides visibility inside hard-to-reach locations. The Ferret Pro features an app-controlled variable focus lens and fast charge.

The Ferret Plus includes built-in (on-board) memory to provide hours of recording even when out of Wi-Fi range. In addition, this model includes a non-contact voltage detector, which is not handheld, to detect live cables from a greater reach. All three are compact and lightweight, weighing just 1¼ oz.

Ferret Tools





INTRODUCING THE LATEST INNOVATION IN INSPECTION CAMERA TECHNOLOGY

Unmatched in durability, functionality and performance



FERRET LITE

FERRET PRO

FERRET PLUS

INSPECT WITH A FERRET - SMART TOOL. SMART CHOICE.

✓ Visual inspections

✓ Cable installations

✓ Maintenance

INSPECTIONS & CABLING MADE EASIER - 3 NEW FERRET MODELS

Supporting easier and faster inspections, cable installations, maintenance and repair work. The Ferret is a versatile, easy to use solution encouraging an efficient and safer work environment. An ideal tool for every electrician, cable installer or data/telecom technician to carry in their tool pouch.

You'll love the NEW technology we've packed into our next generation Ferret Tools range! All three new models incorporate all the award-winning features of the globally accoladed original Ferret as well as innovative new functionality and performance to choose from. Happy Ferreting.



Turn your phone into a smart tool

See the Ferret
in action



**CATEGORY WINNER:
LUMINAIRES
(HARSH & HAZARDOUS LOCATION)**

LED STRING LIGHTS

Outdoor and wet location-rated (NEMA 5-15), Linear LED Tube String Lights offer simplified mounting options; an impact-resistant, high-temperature lens; and a 50,000-hr life. The built-in theft deterrent does not allow the lamp to be used when not attached to the string light. Configured for stand-alone or daisy-chain operation, the products come in 50 ft and 100 ft lengths. Highlights include an operating temperature range of -20°C to 40°C, feed-thru connectivity options, and 200° and 360° beams spreads.

Ericson Manufacturing



SOLAR METER

The FLK-IRR1-SOL Solar Irradiance Meter is designed to take all the photovoltaic (PV) measurements needed to install, verify, and report on the performance of a PV system in one instrument. Users can measure solar irradiance, ambient, and PV module temperature; array orientation; and tilt angles. Instantaneous measurements can be taken to determine the watts per square meter solar irradiation, required by IEC 62446-1 standard. The product also features a high-contrast LCD with large numbers for easy readability in direct sunlight as well as a carry case with a shoulder strap.

Fluke



RECIPROCATING SAW BLADES

Steel Demon 12 teeth-per-inch (TPI) thin metal conduit carbide reciprocating saw blades deliver controlled and clean cuts, the ability to meet tight tolerances, and portability. Featuring a custom-blended high-performance carbide formulation, the blades extend the cutting life up to 50 times longer than standard bi-metal blades, according to the company. Designed to slice through thin metals, producing clean cuts that require virtually no rework, the products feature a 1-in. oversized body that provides stability and rigidity for straighter cuts with less vibration.

Diablo

DIGITAL GROUND RESISTANCE TESTER

The Model 6424 digital ground resistance tester combines two instruments in one to test ground and bonds. Featuring one-button operation, the CAT IV 600V tester offers storage of three measurements along with average and percent deviation. Automatic test frequency selection ranges between 128 Hz and 256 Hz, and the automatic hold function retains the last measurement. In addition, the instrument automatically confirms test injector electrode connection and resistance. Highlights include built-in test lead compensation capability, hazardous voltage detection, leakage current measurement from 0.5mA to 60A, a large backlit digital display, and color-coded inputs and test leads.

AEMC



LOCKING DEVICES

Color-Coded Locking Devices Phase II brings the IEC 60309 color-code standard to locking plugs, connectors, inlets/outlets, and receptacles. Voltage ratings are printed on the devices in a location that is visible even when devices are mated. An ergonomic ultra-grip design on plugs and connectors offers easier handling during use, while the double dove-tail cord grip provides cord alignment and clamp force for wire retention.

Eaton



WALLBOX SENSORS

Smart Wallbox Sensors combine occupancy/vacancy sensing with 0V to 10V dimming or ON/OFF switching. The sensors offer easy programming and configuration, including an out-of-the-box default mode for auto-ON/ auto-OFF operation with a 10-min. timeout as well as pushbutton programming for common room settings. Additionally, the Smart Sensor App can be used to configure and enable features like sensor sensitivity, timeouts, daylighting hold-OFF, partial-ON, partial-OFF, and more.

Leviton

CATEGORY WINNER: WIRE & CABLE

MC CABLE

MC Glide can be pulled in half the time compared to traditional MC cable, according to the company. Compatible with users' current tools and fittings, the RoHS-complaint cable is UL-classified 1 hr, 2 hr, and 3 hr for through-wall penetrations. Features include a 90°C (dry) max temperature rating and a 600V max voltage rating. Additionally, the product can be surface-mounted, fished, and/or embedded in plaster, and is cable tray-rated when installed per the NEC.

Atkore



The professional
monitoring
solution

EC&M
Product of the Year
2021 Category Winner

Shelly® 3EM



Shelly 3EM is a smart 3 phase energy meter with contactor control by Allterco Robotics, the Monitoring and Control Equipment category winner in the 2021 EC&M awards.

Shelly
MAKE IOT SIMPLE

Monitor everything.
Control everything.
Compatible with everything.



Shelly 1



Shelly 1PM



Shelly 2.5

Shelly 1, Shelly 1PM, and Shelly 2.5 are smart Wi-Fi connected relays by Allterco Robotics with UL certification. Visit www.shelly.cloud, e-mail us at info@allterco.com or call us at 702.910.6831

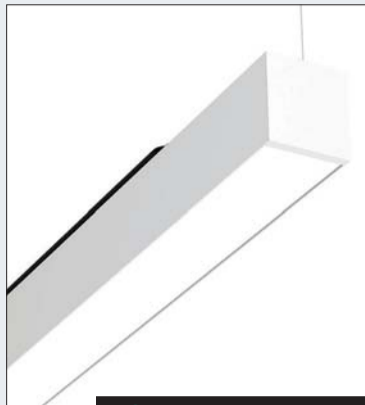


CATEGORY WINNER: LUMINAIRES (DISINFECTION)

GERMICIDAL LUMINAIRES

Designed to disinfect bacteria and inactivate viruses like SARS-CoV-2 and influenza, SpectraClean 254 germicidal luminaires are offered in two product lines. Columbia Lighting disinfection-only luminaires are for applications that can be treated without occupants during times of use. Featuring NX Distributed Intelligence, the products operate independently of the lighting system, can be programmed from the controlHUBB mobile app to operate in a variety of modes for upper air disinfection, and are available in pendant and wall-mount versions. The Litecontrol line offers direct, indirect, or direct/indirect LED ambient illumination with germicidal disinfection. Models include the MOD 4L LED Pendant Direct, the Arcos 59 LED Pendant Indirect, and the Arcos 59 LED Pendant Indirect/Direct.

Hubbell Lighting



CATEGORY WINNER: FASTENERS, HANGERS & ACCESSORIES

THREADED ROD NUT

The Dakota Smart-Nut for trapeze and multi-tiered trapeze hangers is compatible with 12-gauge and 14-gauge strut and 3/8-in. threaded rod. The nut includes snap-on and twist-to-lock features to eliminate the need to clean or chase threads after field cutting threaded rod. Other highlights include a quarter-turn lock for visual verification of proper installation.

Mag Daddy



TIMER CONTROL BOX

The Electronic All-Purpose Contractor Box simplifies the task of installing a contactor box in the field and streamlines installations with an adaptable, all-in-one solution. The product features an enclosure that houses a built-in 7-day Astronomic timer and a 60A 3-pole contactor, as well as optional timed photocontrol functionality and surge protection. Features include intuitive scheduling options and minimal line noise between components. In addition, users can save and transfer lighting schedules using a standard USB drive.

Intermatic

BOX SUPPORT

The Qwikblock box support works with all conduit and box support plates to save more than 15 min. per installation, according to the company. One nut is all that is needed to lock the rod in place, eliminating the need for two washers, one nut, and punching knockout on back of box. The product, which is made of Almag 535 aluminum material, accepts 4-in., 4 11/16-in., or 5-in. square electrical boxes. In addition, it automatically centers the rod entering the box.

S-P Products



CABLE PREPARATION TOOL

With the CableSaber, users can gain mid-span access to armored or thick jacketed cables 4 mm to 28.6 mm (0.157 in. to 1.125 in.) in diameter. This mid-span cable slit and ring tool features a precision steel blade and an adjustable blade depth up to 5.5 mm (0.216 in.). The blade can be set to be longitudinal for slitting or radial for ringing. Additionally, the product features a ruggedized anodized aluminum steel construction.

Jonard Tools



FIRE ALARM MOUNTING SYSTEM

The Preassembled SSB-TBAR with FA-UMAB is a ready-to-install, UL-listed product for mounting fire alarm devices overhead between drop ceiling grids. The 3 1/2-in.-deep, 4-in. square box features a red powder-coat finish. A built-in adapter adjusts from flush to 1 1/2 in. via guided slots. Outer screws allow for box tightening at the desired elevation prior to installation while the double-rail bracket adjusts from 15 in. to 25 in. Users can slide the box or device to the critical position needed and lock it down with a single Tek screw.

Orbit Industries

CATEGORY WINNER: LIGHTING CONTROL EQUIPMENT

WIRELESS LIGHTING CONTROLLER

The Limelight Twist-Lock radio daylight module mounts to any standard ANSI C136.41-compliant dimming receptacle on outdoor luminaires in parking lots, pathways, and flood lighting applications. Simply plug in and twist into the socket. Designed to control pole-style luminaires from different manufacturers in new or retrofit applications, the module works with any 0V to 10V electronic LED driver to enable daylighting, scheduling, and remote monitoring. Combined with the company's Enterprise Vue Software, users can connect outdoor lighting to indoor lighting via wireless control solutions such as Vive Wireless and Quantum systems.

Lutron Electronics



AN INDUSTRY FIRST



CDS Series

NON-METALLIC SLOPED-TOP MOTOR DISCONNECT

- ✓ UL Type 4X; 12
- ✓ NSF Certified; IP69K
- ✓ Labelless Design, Rated 30A, 20HP @ 480V
- ✓ Curved Profile Sheds Water and Contaminants
- ✓ Drop-In Compatible with Industry Standard Footprint
- ✓ Early-Break Auxiliary Contacts Standard

Part of a Full Line of Motor Disconnect Switches



SDS Series

- Stainless Steel
- Multiple Size Enclosures
- Rated 30A – 100A; Up to 100 HP Max



DS Series

- Non-Metallic
- Flat Roof for Top Entry
- Rated 25A – 40A; Up to 30 HP Max



SPEC Grade

- Stainless Steel Sloped-Roof Design
- Multiple Size Enclosures
- Rated 25A – 100A; Up to 75 HP Max



SpecMAXX

- Stainless Steel Sloped-Roof Design
- Multiple Size Enclosures
- Combine Several Disconnects in One Enclosure



CABINET COOLER

The Dual 316 Stainless Steel Cabinet Cooler with electronic temperature control (ETC) is designed to cool electrical enclosures using 20°F (-7°C) air while maintaining the NEMA 4X rating of the enclosure and removing the heat that could adversely affect the internal components. Available with cooling capacities up to 5,600 Btu/hr, which make it suitable for larger enclosures and heat loads, the product is UL-listed and CE-compliant.

EXAIR



EC&M
Product of the Year
2021 Category Winner

CATEGORY WINNER: BOXES

CABLE BOX

Designed for use in commercial applications, the SC082006STRC Dugout Transition Box offers a quick and easy way to transition from MC cable to conduit before entering a load center. A total of 21 built-in STAB-IT cable clamps, which the company says are field-proven to terminate MC cable up to 3× faster than traditional MC connectors, hold up to 42 MC cables. Four concentric knockouts are provided for connecting conduit. Additionally, the UL-listed pull-through transition box ships with a cover.

Hubbell RACO

CATEGORY WINNER: SECURITY EQUIPMENT & SYSTEMS

WIRELESS VIDEO SECURITY SYSTEM

Measuring approximately 2 in. long and is less than 1 in. wide, the SpectraSAFE Integrated Surveillance Lighting System is a scalable, cloud-enabled and light-based wireless video security solution for interior commercial and industrial applications. The integrated module includes a high-resolution 1080p full HD camera with 2.8-mm lens and 140° field of view. Features include an IR emitter for low-light and no-light conditions, and a microphone and speaker for 2-way audio communication. The system also allows users to control 24-7 monitoring from a smartphone or computer.

Hubbell Lighting



EC&M
Product of the Year
2021 Category Winner



CONDUCTOR CONNECTORS

Shear Bolt Lugs and Splices can be installed with an Allen head socket wrench, eliminating the need for compression tooling or a torque wrench. The connectors include a one-hole lug, two-hole NEMA spaced lug, and a splice that accommodate 1,000kcmil Class B or C stranded aluminum or copper conductor. Manufactured from aluminum alloy and tin plated to provide enhanced conductivity and corrosion resistance, each connector is listed to the UL Wire Connector Standard UL486A-486 and can be used in applications up to 35kV.

BURNDY



OUTDOOR LUMINAIRE

Delivering up to 150 lm/w, the Vigilant Bulkhead is a two-for-one replacement for traditional luminaires. The luminaire offers an impact rating of IK10 and an ambient temperature range of -40°C to +65°C. Constructed of marine-grade aluminum alloy, the compact and rugged product offers several mounting options, two optical patterns, and battery back-up models. Other features include in-built 6kV/3kA surge protection, thermal management system, a 10-yr warranty, and a 150,000+ hr life.

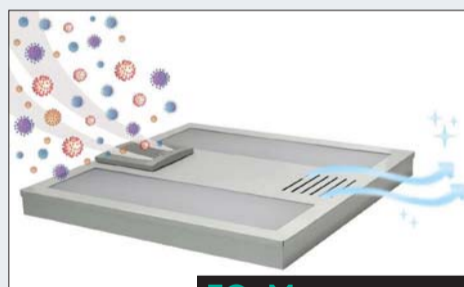
Dialight

CATEGORY WINNER: LAMPS

UVC LED COMBO LUMINAIRE

The UVC Lay-in LED Troffer is a 2-in-1 luminaire that disinfects the air with a concealed and hidden UVC LED light while also performing as an LED Panel. Offering CCTs ranging from 3,000K to 5,000K and adjustable power between 30W to 50W, the troffer features a dual-power supply that allows for 24-7 air disinfection along with the ability to dim or turn the light portion OFF and ON. Available in 2 ft × 2 ft and 2 ft × 4 ft models, the product includes a 5-yr/30,000-hr warranty.

Olympia Lighting



EC&M
Product of the Year
2021 Category Winner



LINEAR FLOODLIGHT

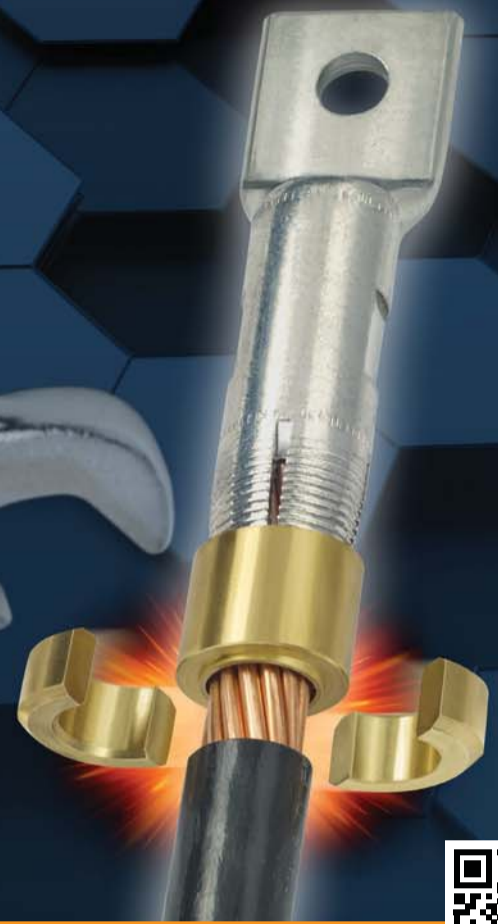
The Intent compact linear floodlight provides illumination for exterior wall washing, grazing, or sign lighting applications in static white, RGBW, and RGBA configurations. The narrow distribution highlights architectural details, while the wide flood produces bands of light. Wall washing creates uniform lit appearance even with 12-in. setback. The 33° horizontal angle provides a blending of colors from fixture to fixture, while the narrow 8° vertical angle creates shadows on the illuminated surface.

Kim Lighting, an affiliate of Hubbell Lighting

*Perfect connections
have never been easier...*

SNAP!

Hybrid compression/mechanical lugs and splices from Greaves get the job done with just a few turns of a standard wrench!



Insert cable...



Turn wrench...



SNAP! Done.



Connectors. It's what we do.



GREAVES

860-664-4505 | 800-243-1130 | www.greaves-usa.com | info@greaves-usa.com



GROUND CABLE CONNECTORS

The CONSTRUCTOR GCS-HEX Series of connectors requires no power tools to install and can ground cable to steel, I-beam, or other flanged surfaces. The connectors are UL-listed for grounding and bonding, and direct burial-rated for installation in both earth and concrete. Additionally, the product allows for parallel or perpendicular conductor orientation, accepts beam thickness $\frac{1}{8}$ in. to 1 in., and conductor ranging from 6 AWG to 500kcmil.

BURNDY

RECESSED LUMINAIRE

The ENVEX recessed ambient luminaire features LEDs and a curved luminous surface to reduce glare. According to the company, the smooth lens and direct-lit over optic technology allow for no individual LED images to be visible to occupants in the space.

Available in two designs that both offer volumetric distribution, features include integrated sensors for individual control, occupancy sensing with PIR or PDT, automatic dimming, or photocell sensing. In addition, the product offers 80% LED lumen maintenance at 60,000 hr and eight lumen packages ranging from 1,500 lm to 7,200 lm.

Lithonia Lighting



RECHARGEABLE WORK LIGHT

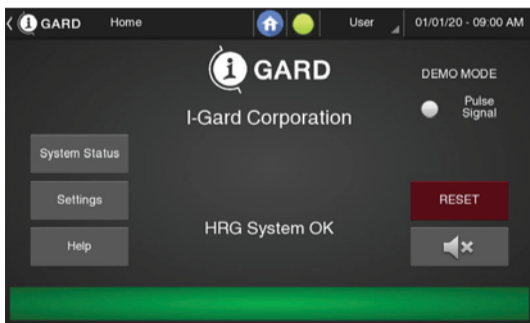
The rechargeable Work-Ready Stinger 2020 work light delivers 2,000 lm and up to 24-hr of run time. Measuring 7.67 in. and weighing 12.3 oz, features include an anti-roll body design, non-slip side panels, and an ergonomic shape for an enhanced grip. Dual power switches and an intuitive mode selector slide switch allow for flexibility in lighting intensity and run time. In addition, the product is powered by two SL-B26TM protected Li-ion USB rechargeable battery packs and offers multiple charging options. Made from aluminum alloy, the IPX7-rated work light includes a Boro-float glass lens that is corrosion-resistant and gasket-sealed. Available in black, it is waterproof to 1 m for 30 min. and is impact-resistance tested to 2 m.

Streamlight

WIRELESS LIGHTING CONTROLLER

The SensorSwitch JOT-enabled wireless solution pairs luminaires and controls without the need for wires, ladders, or apps. Suitable for new construction and renovation projects of single room spaces, the system uses Bluetooth Low Energy (BLE) pairing to allow devices to exchange information to establish an encrypted connection for communication. In BLE mesh, unprovisioned nodes are securely added to the mesh network by the provisioner device, enabling them to communicate with many devices in the network.

SensorSwitch



VOLTAGE MONITORING MODULE

The DSP-TDM is a touchscreen interface that offers ease of use for high-resistance grounding (HRG) systems by providing intuitive operation through on-screen icons. Designed to allow the naming of feeders and real-time trend analysis to assist in troubleshooting, the product features a help button on each screen that allows users to access the product manual, troubleshooting guide, and self-help videos. In addition, it offers remote setup and updates through a USB port upload.

I-Gard

RACEWAY SUPPORT EXTENSION ARMS

Designed for use with the company's Rocket Posts — which are floor mounted assemblies that provide support for electrical and mechanical raceways and products in or near work and processing areas, along conveyors and other locations in the facility where attachment to a support structure (wall or ceiling) is not available — these extension arms provide additional length (extend) to the support surface. Available for either horizontal or vertical configuration and a choice of two lengths (6½-in. slot or 10½-in. slot), the product offers users the flexibility to choose the arm configuration best suited for their application.

Rocket Rack, A Robroy Industries Co.



EC&M
Product of the Year
2021 Category Winner

— Shown Installed —

CATEGORY WINNER: CONDUIT, RACEWAYS & WIREWAYS RACEWAYS

Pedestal Posts are NEMA 3R-listed raceways that power equipment on non-slanted commercial roofs. Available in 30 in. and 60 in. heights, the raceway allows conduit to be routed below the roof line. According to the company, these standalone supports only require one roof penetration and need no extra bracing. Stands are made of hardened, 13-gauge steel to provide more conductor protection than a tubular raceway. Each stand features one-gang openings and includes gasketed blank covers.

Orbit Industries



HUBBELL®
POWERING INDUSTRY



EC&M
Product of the Year
2021 Category Winner

Hubbell's inREACH™ plenum rated enclosure is the first of its kind, allowing customers to securely mount cord reels in drop ceilings, while isolating it from the plenum space. These enclosures are listed to UL2416, making them compliant with plenum requirements per the NEC.

Learn more at hubbell.com/wiringdevice-kellems





RECEPTACLE

The Twist-Lock Edge Series receptacle features screwless terminations to help save more than 80% on electrical projects, according to the company. Instead of using screws at termination points, a strong levered spring within the device continues to apply pressure as strands relax over time, keeping wires tight. Users can quickly complete the installation by hand — no torque screwdrivers or wrenches are required to secure the termination. Simply insert the wires, press the plunger, and watch the spring grab and secure the wires.

Hubbell Wiring Device-Kellems

CATEGORY WINNER: SAFETY EQUIPMENT & WORKWEAR

FLAME-RESISTANT FABRIC

Westex Polartec Power Dry FR fabric knits tri-blend yarn into flame-resistant, temperature-regulating fabrics, meaning dual-hazard thermal protection is engineered directly into the fiber and is guaranteed for the life of the garment. The fabric uses bicomponent knit to deliver mechanical wicking action and high breathability for fast drying times in a shirting fabric. It is available in two weights: a 4.5-oz jersey knit base layer certified to NFPA 2112 and offering NFPA 70E Category 1 protection, and a 6.4-oz. pique knit certified to NFPA 2112 and offering NFPA 70E Category 2 protection.

Polartec



CATEGORY WINNER: TOOLS (ACCESSORY ITEMS)

STEP BITS

The GSB Series of step bits for mild steel features a split-point tip that allows for fast, accurate material penetration, while the progressive split-step design maximizes torque efficiency to minimize stalling and optimize chip load. The double flute design has been improved to deliver enhanced chip evacuation, cutting speeds, and tool life. The bits are available in two sets: 10 Imperial-sized models, ranging from 1/8 in. to 1 3/8 in., and three metric-sized versions, ranging from 4 mm to 32.5 mm.

Greenlee



UV DISINFECTION UNITS

Perma-Kleen Mobile Surface Disinfection Units (PKCARTS) use 175W, 240W, or 320W UV-C options to disinfect potentially contaminated surfaces. The carts feature low-pressure mercury vapor HO quartz lamps with a shatterproof coating to help kill bacteria, enveloped viruses, and non-enveloped viruses, including human coronavirus (such as COVID-19), MRSA, Streptococcus Group A, E. coli, black mold, and listeria. In addition, the IP56-rated industrial cart features an audible alarm, ventilation fans, an antimicrobial powder-coat frame, rubber caster wheels, PIR motion detector sensors, and an E-stop.

Ericson Manufacturing

CATEGORY WINNER: LUMINAIRES (HIGH-BAY)

HIGH-BAY LUMINAIRE

The Compact Pro High Bay is 50% smaller than traditional high-bay luminaires and offers 30% faster installation and cleanup, according to the company. The luminaire comes with a V-hanger hardware kit with two V-hanger brackets and two 36-in. chain lengths. In addition, the product is suitable for mounting by chain, cable, surface-mount bracket, or hook monopoint. When suspended 18 in. off the ceiling, it can be used in ambient temperatures ranging from -40°C to 55°C.

Lithonia Lighting



FLOOR BOX

The 2-gang poke-through floor box offers adjustable anchoring clips as opposed to rigid anchors. Users simply loosen the anchoring clips to remove the device. Two-piece construction allows the box to self-level up to 4°. Featuring an aluminum cover offered in five configurations and four powder-coat finishes, the 5-in. poke-through accommodates both power and data and includes multiple low-voltage divider slots to accommodate different device widths. Additionally, the ADA-compliant covers exceed UL scrub-water testing and UL crush testing (300 lb) by more than 300%.

Leviton

PLUGS AND CONNECTORS

The LEV Series of 30A and 60A plugs and connectors includes the company's Inform Technology, which offers real-time local monitoring data through line-of-sight LED indication. Green LEDs on the devices illuminate when they are energized to increase safety and allow for faster troubleshooting. Features include a screwless back clamp, a threaded housing, a quick-lock pin to speed up installation, and IP68 IP69K ratings.

Leviton



AWARD-WINNING PERFORMANCE.

Winner of EC&M's Product of the Year, Polartec® Power Dry® is one of three game-changing lines in the new Polartec® FR Collection, which combines the best of Polartec® and Westex®. The collection is redefining FR protection with lightweight, durable, breathable fabrics constructed for the world's most demanding jobs.

3 NEW LINES OF NEXT-TO-SKIN KNITS

 POLARTEC®
POWER DRY®

All-Weather Moisture
Management

 POLARTEC®
POWER GRID™

Less Is More
Technical Fleece

 POLARTEC®
WIND PRO®

Advanced Weather
Resistance

DISCOVER THE COLLECTION
WESTEX.COM/ECM 864-712-7887

 POLARTEC®  **WESTEX®**
A MILLIKEN BRAND

CATEGORY WINNER: MOTORS, DRIVES & MOTOR CONTROLS

MOTOR DISCONNECT SWITCHES

The CDS Series of nonmetallic, curved-top motor disconnect switches features a curved profile to eliminate standing water and minimize contaminant buildup. The chemically resistant thermoplastic enclosure includes UL Type 4X and IP69K ratings that make it resistant to frequent high-pressure washdowns. The highly visible handle is lockout/tagout (LOTO) compliant, while the 30A 25-hp rating satisfies most line disconnect requirements. Other features include laser marking for permanent identification, captive stainless-steel cover screws, a poured-in-place seamless gasket, and impact-modified and UV-stabilized materials.

MENNEKES Electrical Products



OUTLET COVER KIT

The TayMac DOCK320 Deck Outlet Cover Kit provides a safe and code-compliant way to add an electrical outlet to any raised deck floor. Included in the kit are a 15A GFCI receptacle, a gasketed weatherproof 1-gang metal electrical box, and a low-profile deck outlet cover. Suitable for use with lights, fans, and electronic appliances, the wide-opening lid covers a recessed space big enough to accommodate larger cords and plugs. In addition, the product is cULus-listed and NEMA 3R compliant.

Hubbell TayMac

GLOVE PROTECTORS

Made of NuBuck premium-grain cowhide leather, Saf-T-Gard Voltgard Supreme Leather Protector Gloves come in 12-in. or 14-in. lengths and fit over straight and bell cuff Class 1, 2, 3 and 4 rubber insulating gloves. Designed to protect against cuts, abrasions, and punctures, the gloves will not absorb dirt, oil, grit, grime, or moisture, according to the company. Features include leather binding, a straight thumb design with thumb strap, and a split leather gauntlet cuff that extends protection past the wrist.

Saf-T-Gard International



CATEGORY WINNER: LUMINAIRES (SUSPENDED)

ARCHITECTURAL LUMINAIRE

The Linear Express Program offers next-day shipping on qualified products, which includes luminaires with a one-piece aluminum housing, standard 0V to 10V 1% dimming with dim to off standard, and a 10-yr warranty. The program offers continuous linear runs of recessed and suspended mount LED products with a wide variety of color temperature and lumen output combinations, and emergency battery options.

American Linear Lighting



MULTIPURPOSE LADDER

Featuring a 375-lb duty rating, the LEANSAFE X3 multipurpose ladder is suitable for commercial and residential applications. The 3-in-1 ladder is ANSI- and OSHA-compliant, and can be used in multiple scenarios, including: leaning directly against a wall, corner, or stud; as a conventional step ladder; or as a straight ladder with a 13-ft reach. Features include a magnetic tool tray at the top and an internal hinge mechanism, allowing users to unlock the pivoting legs with one hand. The width of the rear rungs allows the rails to fit between standard wall studs.

Werner



CATEGORY WINNER: RACKS & ENCLOSURES

STEEL ENCLOSURE

The inREACH plenum-rated enclosure allows users to securely mount a cord reel in drop ceilings. The UL 2416-listed steel enclosure is temperature tolerant and conforms to strict safety standards so as not to contribute to the spread of smoke or fire within a building through plenum spaces. Features include a white powder-coat finish, 75-lb capacity, an included 4-in. square electrical box, and pre-punched knockout hole.

Hubbell Wiring Device-Kellems



PANELBOARD

The ReliaGear neXT Power Panelboard eliminates bolt-on components to expedite installation and commissioning time. According to the company, one person can install or replace components in seconds, using just one tool, with plug-in breakers that can be installed anywhere on the bus stack. Features include Ekip Connect software, optional Bluetooth connectivity, and touch-screen HMIs. The modular design allows users to change feed direction, ground, and neutral location while the distribution panel — which offers IP20 features — helps reduce arc flash risk.

ABB



LINEAREXPRESS

NEXT DAY SHIPPING



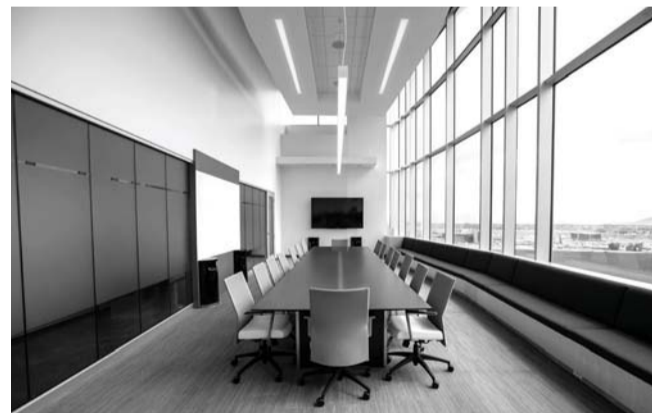
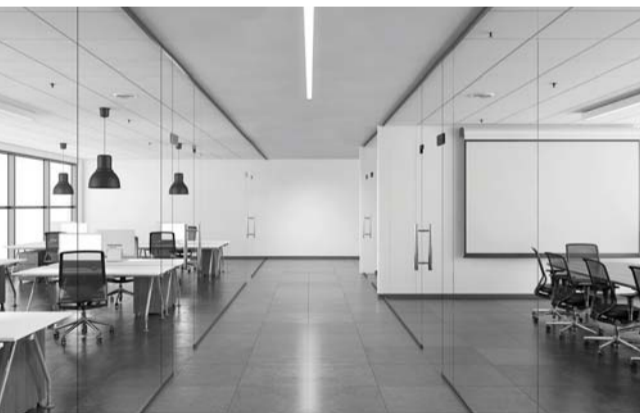
FASTEST LINEAR LEAD TIMES

SPEED ✓

PRICE ✓

QUALITY ✓

GET IT ALL



PLEASE VISIT OUR WEBSITE FOR MORE INFORMATION
AmericanLinearLighting.com/Linear-Express

EC&M
Product of the Year
2021 Category Winner

CATEGORY WINNER: CONSTRUCTION EQUIPMENT SOLAR LIGHT TOWER

Designed to provide temporary lighting, the TWINKO mobile solar light tower features an aluminum mast and four telescoping sections. The double heads can be assembled with SUN-LIKE 20W/30W and SUNLIKE PRO 30W solar light fixtures. Measuring 16-ft-tall, features include removable double mast heads, forklift pockets in the base, and four manual stabilizer legs. An integrated LED solar area light is offered in 4,000 lm and 6,000 lm and comes with a 150 AH, 1,500W gel battery. The electrical winch, which is rated to 3,000 lb, includes a limit sensor and offers 12VDC operation.

Soltech Lighting



EC&M
Product of the Year
2021 Category Winner



EC&M
Product of the Year
2021 Category Winner

CATEGORY WINNER: COMPUTERS & SOFTWARE ENERGY MANAGEMENT SYSTEM

The EnergyPQA.com system offers cloud-enabled energy management, predictive artificial intelligence (AI), and power quality analytics. Through AI, the system predicts future usage trends, allowing users to proactively reduce demand and save on energy costs. The product also provides insights into power quality to increase enterprise power reliability. In addition, it reports total energy used, energy used per square foot and per occupant, and carbon footprint for each facility. Secured access prevents hacking or tampering.

Electro Industries/GaugeTech

FUSES

The PSX Series of high-speed semiconductor fuses offers system protection with up to 1,500VDC and 200kA DC short-circuit fault current interrupting capacity. Available from 80A to 1,400A with small NH XL package sizes, the fuses include low watt loss, a small case size, visual fault indicator, and low minimum-breaking capacity to protect from lower level currents. DIN-mount, flush-end and bolted-blade terminations are designed for versatility with mounting configurations.

Littelfuse



CATEGORY WINNER: PROTECTIVE DEVICES

CIRCUIT BREAKERS

Designed to work in extreme conditions, SACE Tmax XT molded-case circuit breakers monitor and control distribution. The Tmax XT7 and its motorized counterpart, the XT7M, are available for heavy-duty applications up to 1,200A. Commissioning is simplified by the company's software, optional Bluetooth connectivity, and touchscreen HMI. The products also feature embedded load shedding and peak shaving capabilities; real-time load monitoring; and advanced protections for voltage, frequency, and power monitoring.

ABB



EC&M
Product of the Year
2021 Category Winner

WIRELESS CONTROLLER

The TruBlu Bluetooth-DALI Wireless Fixture Controller pairs Bluetooth connectivity with DALI networks. Offering ON/OFF, dimming, and color-tuning control for indoor and outdoor applications, the controller enables asset management and tracking via the Bluetooth beacon as well as real-time energy reporting. The IP65-rated device also provides wireless access to DALI 2.0 LED driver data, including the ability to track hours of operation and thermal conditions during operation.

McWong International



EC&M
Product of the Year
2021 Category Winner

CATEGORY WINNER: LUMINAIRES (SURFACE MOUNT) UNDERCABINET LUMINAIRE

The BalancedCare undercabinet luminaire provides task lighting in a 3/8-in. profile. Offered in 10 in., 16 in., 23 in., 30 in., 36 in., and 42 in. lengths, the luminaire features touch-free ON/OFF, dimming, and adjustable white light color temperatures of 2,700K, 3,000K, 3,500K, and 4,000K. Other highlights include four-position selectable CCT or static CCT, non-ferrous construction, and interconnect and power cord set accessories.

Axis Lighting

CATEGORY WINNER: CONNECTORS & TERMINATING DEVICES

WIRE CONNECTORS

The SNAP! hybrid compression/mechanical connector allows for installation in tight, limited spaces using just a common wrench. The UL-listed connectors are available in one-hole lugs, two-hole NEMA lugs, and splices. In addition, the American-made product covers wire sizes from 2 AWG through 500MCM.

Greaves

EC&M
Product of the Year
2021 Category Winner





CABLE MANAGEMENT SYSTEM

The Solar Snake Max XL system accommodates cables ranging from 350kcmil up to 750kcmil cable within one universal click support module. The easy snap-together components are designed to maintain NEC 310.15 Code-compliant cable separation of power cables up to 2kV with no requirement to derate the cables. Engineered to mount with messenger wire or aluminum rails to any style of vertical pilings or poles, the product installs quickly with snap-together components with no tools or field fabrication required.

Snake Tray



WIRE STRIPPER

The Forged Wire Stripper is designed to strip and cut both solid and stranded wire between 10 AWG and 20 AWG. Made from forged and multi-stage oil-hardened steel, the tool features screw cutting holes for 6-32 and 8-32 screws, a lock, an internal spring for easy opening, and a bolted joint. The product also includes locating ridges between the stripping holes for faster identification of the correct stripping holes, wide knurled gripping jaws for twisting wires, and induction-hardened shear cutting blades designed to cut individual wires, NM-B, BX/MC, and battery cable.

KNIPLEX Tools



UNIVERSAL MODULE

Measuring 20 mm × 33 mm × 13 mm, the compact Shelly Uni universal module features flexible wiring options and support for multiple inputs or outputs. The module, which has a range of 50 m outdoors and 30 m indoors, is powered by 12VDC to 36VDC and 12VAC to 24VAC, and rated for 100mA. A transparent insulating coating protects the device from dust, humidity, or shorts. Additionally, the product works in a secured stand-alone mode, with access via the built-in AP mode, connected to a local Wi-Fi network, and to the company's free cloud service.

Allterco Robotics US



RIGHT-ANGLE DRILL

Designed for electrical rough-ins, the M18 FUEL HOLE HAWG Right Angle Drill features an upgraded brushless motor to provide additional power in high-speed applications and improved electronics to increase power under load. When equipped with a M18 REDLITHIUM HIGH OUTPUT XC6.0 battery, the company says the tool can drill up to 220 7/8-in. holes in SPF lumber on a single charge.

Milwaukee Tool

CATEGORY WINNER: TOOLS (HAND)

CABLE SHEARS

StepCut cable shears measure 6¼-in. long and are designed to cut solid, multi-core stranded copper, and aluminum cables up to 1/0 AWG. According to the company, cutting edge gradations cut wires and strands one by one, making cutting up to 40% easier than standard cable shears of the same length. The cutting edges are milled to a wavy form on the front and ground flat on the back. Features include induction-hardened cutting edges, a pinch guard, precision-ground blades, and a bolted joint design.

KNIPLEX Tools



DISCONNECT SWITCH

The Slope Top Stainless Steel Disconnect Switch features a 15° sloped top to keep water away from critical components. The 30A/32A switch includes a long handle to accommodate three padlocks to comply with OSHA lock-out/tagout regulations. Ratings including IP66, IP67, IP68 IP69K, NEMA 3R, 4X, 6, 6P, 12, and 13. Additionally, the compact device features a steel switch rod and an anti-slip rubber overmold.

Leviton

STAINLESS STEEL FITTINGS

Stainless Hygienic Fittings are designed and tested to provide corrosion protection in sanitary environments. The UL Type 4X-listed and IEC IP69-rated products feature a hygienic designed conduit body and cover, an electro-polished finish and center aligned threading of the conduit, and circular gasket. In addition, the overall sealed system provides ingress protection against dust and high-pressure/high-temperature spray for enhanced safety and sanitation within plant operations.

Robroy Industries



DISTRIBUTION EQUIPMENT

The ReliaGear SB switchboard features plug-in, single-tool, fast component installation or replacement in the field. The IP20 finger-safe bus stack is designed to reduce the risk of contact with live parts while performing startup or maintenance activities. In addition, circuit breaker integrated Bluetooth technology enables users to set parameters and check measurements directly from a smartphone in an arc flash-free zone.

ABB

RACEWAY

Installers can mount FloorTrak PRO, an ADA-compliant raceway, over existing floor coverings or flush with the floor using additional edges. Available in aluminum or dark gray in three standard sizes and angled and T sections, a pre-wired kit of mixed sizes prevents users from needing to cut through the raceway. In addition, multiple channels allow power, data, and AV to be run separately through the tray. Multiple 2-gang and 3-gang device boxes as well as pre-cut sections of raceway are available to fit all installations.

Hubbell Wiring Device-Kellems



3-PLANE LASER LEVEL

The M12 Green 360° 3-Plane Laser Kit provides 15+ hr of continuous runtime when paired with the company's M12 REDLITHIUM 4.0 XC battery. The green laser offers visibility up to 250 ft (diameter) for long-range applications. The three 360° planes include horizontal and two vertical lines for alignment, leveling, squaring, and transfers. The integrated bracket features a micro-control and pivots on plumb point, while the amplified rare earth magnets will not slide on steel studs.

Milwaukee Tool

CATEGORY WINNER

(LUMINAIRES (OUTDOOR - AREA/SITE))

WALL-MOUNTED LUMINAIRES

ARC LED wall-mounted luminaires save 80% in energy costs, according to the company. Available in two sizes, lumen packages range from 1,500 lm to 6,500 lm to replace 70W to 250W metal-halide lamps. Applications include over-the-door lighting to mounting heights of up to 15 ft. Features include an emergency battery pack, photocell, CCT, and finish options. In addition, the recessed diffused lens cuts off high-angle light and reduces glare.

Lithonia Lighting



SUSPENDED LUMINAIRE

The Lithonia Linear (LL) luminaire is designed to suspend in open ceiling spaces. Built on an extruded aluminum chassis, the luminaire utilizes power modules and light bars that eliminate the need for wire-ways and through wires. The 8-ft model weighs 7.5 lb, and the 16-ft model weighs 12 lb. Both versions come in 6,000-lm, 8,000-lm, and 10,000-lm packages. In addition, battery backup and control options are available. Finishes include white, natural aluminum, and black.

Lithonia Lighting

SCREWDRIVER SET

The ESD Safe Screwdriver Set with Case features a set of six ESD safe screwdrivers, including Phillips #00, Philips #0, Slotted 1.5 mm, Slotted 2 mm, Slotted 2.5mm, and Slotted 3mm. The tools are designed with static dissipative material for protection from electrostatic energy fields and ESD damage. Features include machined black tips, rotating end caps, and soft-grip handles. Electrical Surface Resistance is 10E6 to 10E10 Ω/sq, and the ESD properties are based on DIN EN 100015-6.

Pomona Electronics





JACK

Designed to increase productivity and decrease fatigue, the All Jack lifts and supports a workpiece weighing up to 175 lb while it is anchored into position. Offering a reach ranging from 58 in. to 13 ft, 6 in., the 25-lb jack features an industrial gas shock that ensures a snug, stable support that stays in place while an installation is completed. Once a workpiece is secured into place, simply remove the jack by releasing the shock.

iTOOLco

DISINFECTION LAMP

The In-Duct UVC LED Air Disinfection Lamp reduces 99.9% of viruses, bacteria, and mold in 60 min., according to the company. Designed to mount in seconds, the lamp comes in three sizes and produces UVC light at germicidal disinfection wavelength in circulating air systems. Features include an operating range of 120VAC to 277VAC, a 30,000-hr life, and a 5-yr warranty.

Olympia Lighting



CATEGORY WINNER: VOICE/DATA/VIDEO EQUIPMENT

FIBER PANEL SYSTEM

The Robotic Fiber Panel System with Mini Chassis requires 7U of rack space and is available in single-mode and multi-mode models. Featuring 204 LC fiber ports, the system uses robotic latching technology to perform connections between switches and servers in 15 sec. Two robotic arms move cables into place. Additionally, the product can be configured to accommodate nearly 500,000 ports, all optical signals, and all network protocols.

Tripp Lite



DIGITAL SWITCHGEAR

Part of the company's Ability product line, ANSI medium-voltage digital switchgear reduces wiring by 50% or more and offers a 25% smaller footprint, according to the company. The UL-certified metal-clad digital switchgear offers the ability to integrate SwitchgearMD technology for continuous and remote condition monitoring and self-supervision. Sensors help eliminate the hazards associated with open current transformers and ferroresonance in potential transformers, while simplified electrical construction helps lead to fewer internal points of failure.

ABB

CANOPY LUMINAIRE

The Vanish Petroleum Gas Canopy is designed for convenience store and petroleum applications. The luminaire features edge-lit technology for even illumination on the surface of the fixture. Wet location-listed and IP65-rated, the product has a height of 2.1 in. Features include a white powder-coat finish, acrylic lens, and cast-aluminum housing with an integral heat sink for thermal performance and long LED life. In addition, the housing construction allows for new or retrofit installation via surface or pendant mount.

Hubbell Lighting

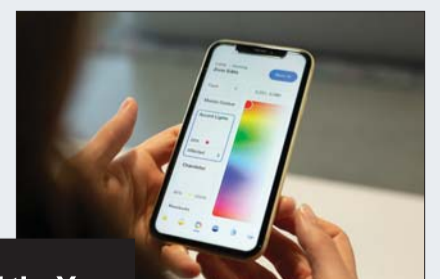


CATEGORY WINNER: LIGHTING CONTROL SYSTEM

LIGHTING CONTROL SYSTEM

Designed to work with any source, fixture, load type, or protocol, the Athena Dynamic Lighting System features an app-based setup and control in a small footprint. Ketra curated content offers preset lighting changes to mimic natural daylight, as well as integrated shading capabilities. The iOS app allows real-time programming that allows for the customization of lighting designs with warm dimming, tunable white, and a spectrum of saturated colors. The hub is built for cloud compatibility and features automatic software upgrades.

Lutron Electronics

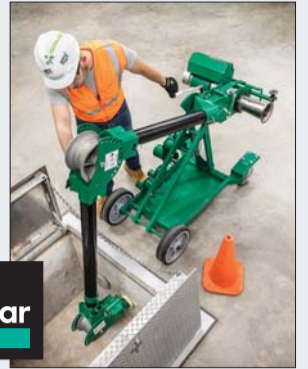


CATEGORY WINNER: TOOLS (EQUIPMENT)

CABLE PULLER

The G10 TUGGER features a 2-speed custom-designed motor capable of continuously pulling up to 8,000 lb and a total pulling force up to 10,000 lb. The Force Indicator Display visually shows the operator the pull in increments of 1,000 lb. The cULus-listed motor features a right-angle sheave and multi-purpose foot switch, which allows the user to select between high or low speed. Mounting options include the Mobile VersiBoom for one-person set up, chain mount for tighter spaces, and floor mount for pulling applications.

Greenlee



EC&M
Product of the Year
2021 Category Winner

HAZARDOUS LOCATION LUMINAIRE

Offering up to 69% in energy savings, the Sylvania UltraLED Wide Body Dual Selectable Vapor Tight luminaire is an LED alternative to HID or fluorescent models. The luminaires come in two selectable wattage/lumen packages (60W, 75W, or 90W and 120W, 150W, or 180W) that provide light outputs of up to 27,000 lm. Each package delivers 3,500K, 4,000K, or 5,000K illumination via the selectable switch. Designed to be surface mounted or suspended, these IP65-rated products feature both NSF splash zone and NEMA 4X ratings. In addition, they are 0V to 10V dimmable and can be ordered with optional motion sensors and battery back-up units.

LEDVANCE



CORE DRILL

The MX FUEL Handheld Core Drill is designed to core up to 6-in. holes in reinforced concrete. The battery-powered tool features a clutch and AUTOSTOP technology, which provide the user with maximum control and reduced kick back during bind-up situations. A performance gauge guides users on the optimized drilling speed to speed drill time, and the LED level helps them maintain accuracy throughout the application.

Milwaukee Tool

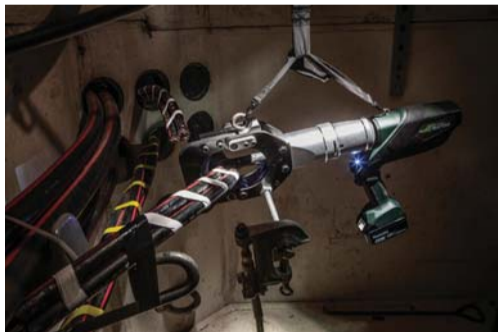
CATEGORY WINNER: PORTABLE TEST & MEASUREMENT EQUIPMENT

ELECTRICAL TESTER

The T6-1000 PRO Electrical Tester measures voltage and current without test leads and displays both readings simultaneously. The product measures AC voltage up to 1,000V, AC current up to 200A, resistance ranging from 1 Ω to 100 k Ω , and frequency ranging from 45 Hz to 66 Hz on wires up to 4/0 AWG (120 mm²). Features include true-rms for accurate voltage and current measurements and FieldSense technology to measure AC voltage, current, and frequency without making electrical contact to live voltage.

Fluke

EC&M
Product of the Year
2021 Category Winner



CABLE CUTTER

The Remote Cable Cutter ESG105LXR allows users to confirm that the shielded cable they are planning to work on is not energized. The product features a flip-top jaw, a cutting capacity of up to 4.13 in., and a cutting head that rotates 350°. In addition, an LED level indicator on the battery and built-in tool self-test confirms the ability to complete the cut.

Greenlee

LINEAR LED LAMPS

The versaDim RF TLEDs are wirelessly controlled linear LED lamps that include a handheld radio frequency remote control. Offered in 4-ft, 12W, Type B, double-ended input LED tubes, the products offer a push-button pairing of the remote to the lamp, avoiding the commissioning of wireless systems and the downloading of mobile apps. The remote features a wall-mounted charger, while the signal repeating function extends the range of the remote control.

Espen Technology





BOLLARD REMOVER

The HBL-4 Bollard Lifter can lift a 4-in. pipe bollard up and out of the pipe sleeve in which it is installed. Designed to fit over the 4-in. end cap, the lifter features an ergonomic handle. The one-piece product contains no moving parts, no assembly is required, and is suitable for use on unfinished steel, galvanized pipe bollards, and pipe bollards with HDPE covers.

Hartman Products

CATEGORY WINNER: MONITORING & CONTROL EQUIPMENT

ENERGY MEASUREMENT DEVICE

Shelly 3EM is a Wi-Fi energy measurement device with 10A contactor control, monitoring up to three phases between 110V and 230V per line. The device measures and controls two phases with neutral or three mono-phase points. Data on total consumption in kW is displayed, combined with reactive, voltage, and power factor values. Additionally, the product offers the ability to work in a secured stand-alone mode, with access via its built-in AP mode, connected to a local Wi-Fi network, and to the company's free Cloud service.

Allterco Robotics US



HAZARDOUS LOCATION LUMINAIRE

According to the company, the High CRI Class 1 Division 2 LED luminaire uses less than half the energy costs of a linear fluorescent luminaire at 124 lm/W. The luminaire offers C1D2, a 95 CRI, IK10 impact rating, daisy-chain connections, and a DLC Premium Listing. The 50,000-hr life is rated to last two-and-a-half times that of a typical fluorescent T8 lamp at 20,000 hrs, which results in a 60% reduction in replacements. Designed to replace 4-ft and 8-ft linear fluorescent light sources, the product includes an integrated connector cable for ease of installation.

eLumigen

CATEGORY WINNER: POWER DISTRIBUTION EQUIPMENT

POWER DISTRIBUTION DEVICES

LEV Series Mechanical Interlocks with Inform Technology are electrical power distribution devices embedded with Inform, an Industrial Internet of Things (IIoT) technology platform. The devices identify potential disturbances by monitoring liquid accumulation, enclosure temperature and humidity, and individual line-side and load-side voltage value. They also send data to facility managers 24-7 via the Inform app. Feature include ingress protection ratings of IP68 and IP69K for high-temperature, high-pressure washdowns.

Leviton



AUTOMATIC TRANSFER SWITCH

The PWRview Automatic Transfer Switch (ATS) features a Home Energy Monitoring System built directly into the switch equipment. The ATS allows any home that is being equipped with a home standby generator to immediately access insights about the home's energy consumption. With the monitor already built into the transfer switch required for the generator, energy insights become available as soon as the generator system is installed. The PWRview app, which is available for any smartphone, allows for monitoring of the home's energy use from anywhere in the world.

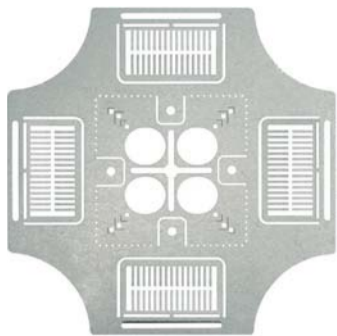
Generac Power Systems

LED RETROFIT KIT

The LBK Light Bar Kit provides an LED option for retrofit in fluorescent fixtures with T8, T12, or T5/T5HO lamps without the need to remove the housing from the ceiling. Offered in 4-ft, 3-ft, and 2-ft configurations, the product features a rigid, formed steel channel, LED boards and diffuse acrylic lens. Numerous lumen packages, wattages, and bar configurations are available. In addition, it features efficacies up to 168 lm/W at the bar and built-in 0V to 10V dimming capability.

Lithonia Lighting





POSITIONING DEVICE

The 4-Way Conduit & Box Plate Split Fingers Positioning Device for horizontal or vertical installation products eliminates the need for conduit clamps, which the company says saves more than 1 hr of installation per box. The product can be used with 4-in., 4¹¹/₁₆-in., or 5-in. square outlet boxes and 6-in. × 6-in. or 8-in. × 8-in. junction boxes. Parts are cULus-listed and made of 18-gauge galvanized steel or stainless steel, if needed.

S-P Products

CATEGORY WINNER: TOOLS (POWER)

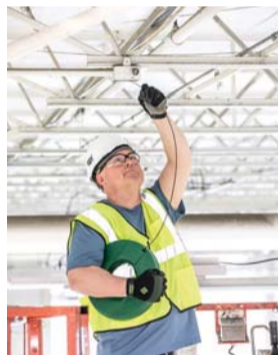
BATTERY-POWERED CRIMPER

The PATRIOT PAT750T3 Battery Crimper Series with T3 Technology allows users to track crimp locations with on-board GPS; trace individual crimps with comments and output force validation; and transmit via Bluetooth technology and sync data to the cloud. The tool, which is used with U dies, features a C-head with 1.65-in. jaw opening and 355° head rotation.

BURNDY



EC&M
Product of the Year
2021 Category Winner



FISH TAPES

REEL-X fiberglass fish tapes feature a fatigue-reducing case design that the company says requires less energy and reduced friction for faster fishing. The no-handle case can be set in multiple hands-free positions while the interior free-spinning reel speeds up a pull by eliminating binding and overcoming kinks with the reduction of tape friction. The quick-change cartridges allow an easy swap-out of reel cartridges to quickly replace tape. The product offers a primary and secondary exit and built-in storage lock.

Greenlee

CATEGORY WINNER: WIRING DEVICES

WI-FI DEVICES

Wi-Fi Smart switches, receptacles, and dimmers don't require a hub or controller, set up quickly within Amazon's Alexa App, and can be controlled with an Amazon voice-controlled device. LED indicators confirm proper installation. The WFD30 is designed for single-pole, 3-way, and multi-location applications, and the WACD accessory dimmer is compatible for the WFD30 for multi-location control. The WFSW15 smart switch and WF-TRCR15 duplex receptacle can be wired with a standard 3-way switch where the traveler wire exists.

Eaton



EC&M
Product of the Year
2021 Category Winner



DIMMER

The Bluetooth WASP provides ON/OFF and 0V to 10V dimming control with remote programming using an updated Bluetooth app. Available in end-mount and surface-mount versions, the dimmer features single- and dual-motion sensor timers. With the dual timer mode, users can set two different levels after the space has become unoccupied. The app features manual sensor control and slider controls to adjust values, lighting levels, sensitivity, high/low thresholds, and ramp rates.

Hubbell Lighting

INDUSTRIAL LABEL PRINTER

Suitable for industrial labeling applications, the LW-Z5010PX prints high-volume label batches of 1,500 labels or more up to 2 in. wide (50 mm) using 147-ft (45-m) bulk roll label supplies. Features include quick and easy loading via drop-in cassettes and cartridges along with an onboard QWERTY keyboard and 2-in. color touchscreen that make it possible to design and preview labels in the field. Fully compatible with the company's mobile apps and Label Editor software, the product allows the labels to feature icons, symbols, bar codes, QR codes, logos, or sequential alphanumeric information.

Epson





A Ground Resistance Tester with *Your Safety* in Mind

The Highest Safety Rated Ground Resistance Tester on the Market

- Two instruments in one – test Ground and Bonds
- Low cost, great performance and feature rich
- One button connect - press - read operation – *eliminates testing errors*
- CAT IV 600V rated – *ensures operator safety*
- Storage of 3 measurements along with average and % deviation – *easily determine proper test results*
- Automatic frequency adjustments – *improves accuracy*
- Automatic continuity and resistance check of the H electrode
- Voltage and current measurement capability
- IP65 dust proof, weather-resistant and flame retardant – *works in all environments*



MODEL 6424

Complete Kits Available
(provides the ability to test most systems)

CALL US TODAY!

(800) 343-1391
www.aemc.com
sales@aemc.com



QUICKLY TRANSITION FROM MC TO CONDUIT TO ENTER A LOAD CENTER



EC&M Product of the Year 2021 Category Winner

RACO's Dugout Transition Box features 21 built-in STAB-iT® cable clamps, holding up to 42 MC cables. Our unique design is field proven up to 3X faster than traditional MC connectors! Get more labor savings and installation flexibility than any other transition box on the market.

The Dugout Box complements our other recent Product of the Year award winners, the **Grand Slam Box** (2018) and the **Shield-IT™ MCPCS Wire Connector** (2020).

Grand Slam Box



Shield-IT MCPCS Connector



Ask your distributor for the Dugout Box today.

© 2021 Hubbell Incorporated

